

# Empowering Health Informed Choices

---

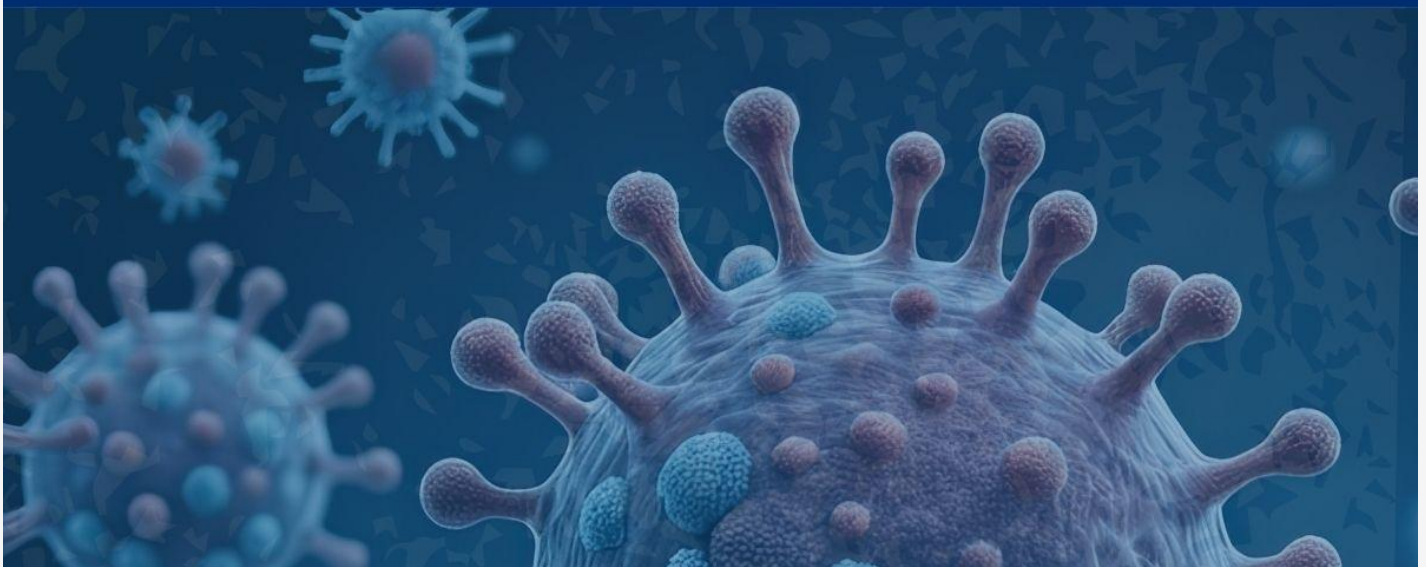


## Critical Infectious Disease Updates

CORI has researched and identified critical updates related to the infectious diseases listed below.

# MEASLES OUTBREAK

AS OF  
MARCH 14, 2025



## Recent Developments Across the US and New Case Reports

CORI continues to classify the current U.S. measles outbreak as Scenario 3: the development of 1–2 large outbreaks. While the general public and healthcare workers face low risk, unvaccinated individuals and children are at moderate to high risk.

Key updates include:

- Texas & New Mexico outbreaks are now considered one, with new cases spreading to Oklahoma.
- Sporadic cases have been reported in Vermont, New York, California, and Pennsylvania, often linked to international travel [↗](#).
- 286 cases have been reported in 2025 so far, with at least 17% hospitalized [↗](#). The majority of cases are among unvaccinated individuals.
- The MMR vaccine [↗](#) remains a critical tool in preventing outbreaks, with

U.S. coverage currently slightly below the 95% threshold needed for herd immunity.

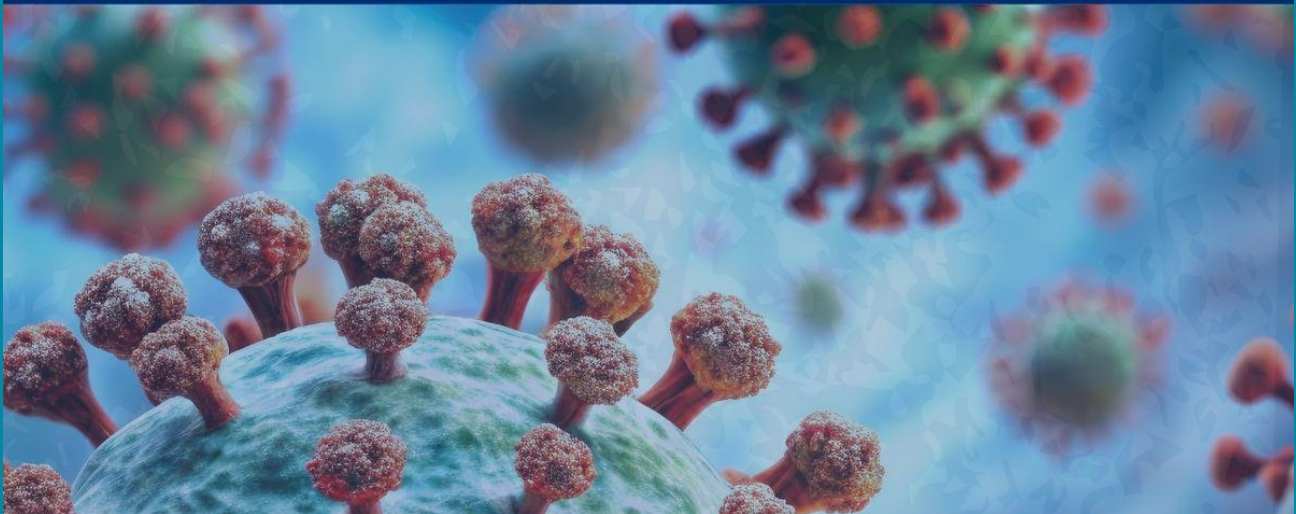
To view the full risk assessment → [CLICK HERE](#)

CORI has also launched a measles dashboard [□](#) to provide real-time data on reported cases and vaccination coverage.

To view the dashboard → [CLICK HERE](#)

# AVIAN INFLUENZA A(H5) OUTBREAK

## AS OF MARCH 13, 2025



### **H5N1 Outbreak Update: Risk Level Raised**

As of March 13, 2025, 70 human cases of H5N1 and one death have been reported across 13 states. The virus continues to affect cattle and poultry across the country. Last week CORI updated the risk level for the ongoing H5N1 outbreak, raising it from scenario 4 to between scenarios 4 and 5. This decision is based on recent detection of the PB2 E627K mutation in infected US cattle, which is known to increase the likelihood of efficient human-to-human transmission. These new developments underscore the need



for an immediate, comprehensive strategy to protect US agriculture and people from H5N1.

Risk Factors:

Scenario 4: Increased potential for human adaptation and increased reports of human infections

- High risk to farm workers
- Moderate risk to people in contact with affected workers and animals
- Low risk to healthcare workers & general public

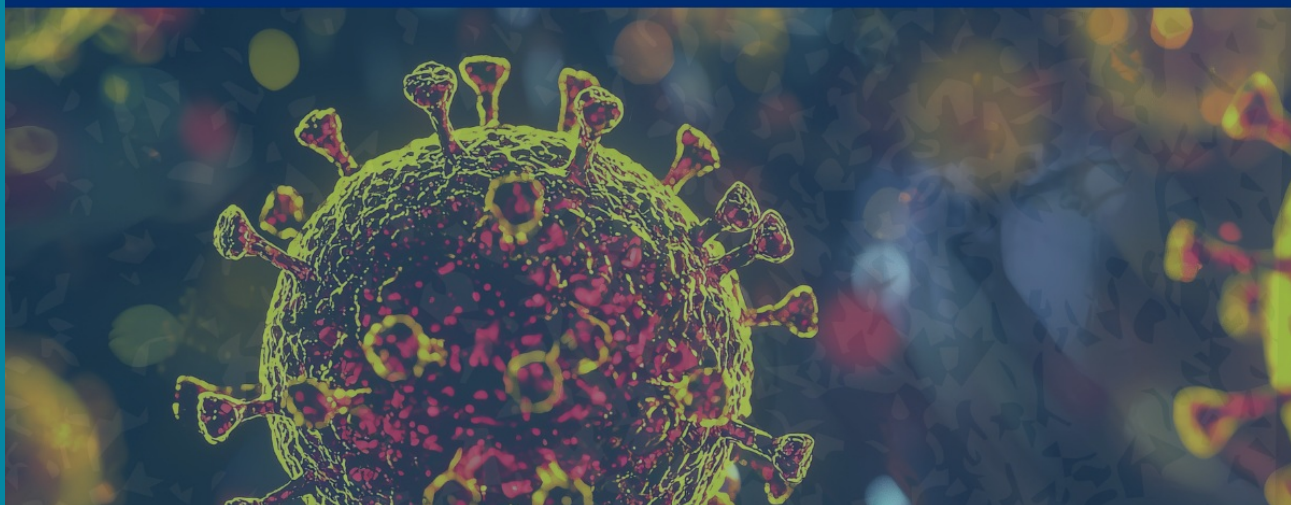
Scenario 5: Limited human-to-human transmission in close contacts

- High risk to farm workers
- Moderate-high risk to people in contact with affected workers and animals
- Moderate risk to healthcare workers
- Low-moderate risk to the general public

To view the full risk assessment → [CLICK HERE](#)

# DENGUE FEVER OUTBREAK

AS OF  
MARCH 14, 2025



# Dengue Fever Surge: Increased Cases & Growing Risk Across the US

- As of March 13, 2025, 985 dengue cases have been reported for the year, with local transmission continuing to rise in endemic areas.
- Confidence in Risk Scores: Since January 30, 2025, our confidence in risk scores has shifted from moderate to high, based on updated reporting trends and the CDC's historical data.
- Key Takeaway: While the overall risk remains low for most of the US, it's essential to stay informed and take necessary precautions when traveling to areas with active local transmission.

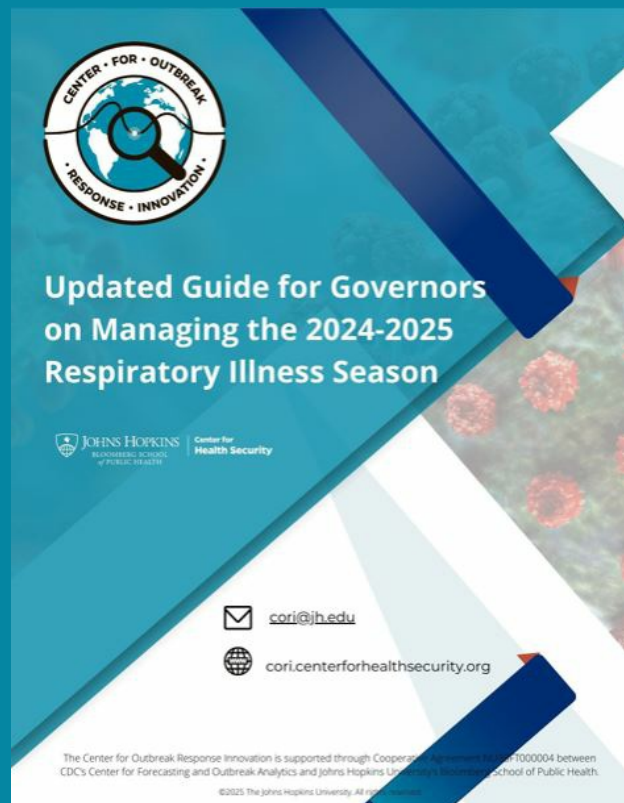
To view the full risk assessment → [CLICK HERE](#)

## New Resources

### UPDATED Guide for Governors

CORI and the National Governors Association released a joint Issue Brief on the management of seasonal respiratory illnesses, which contains guidance for states on what to expect for the remainder of the 2024-2025 respiratory illness season, including what governors can do when things are going as expected and if things get worse.

As of March 2025, CORI has updated surveillance numbers for the current flu season and targeted guidance based on those trends.



To view the Updated Guide for Governors → [CLICK HERE](#)

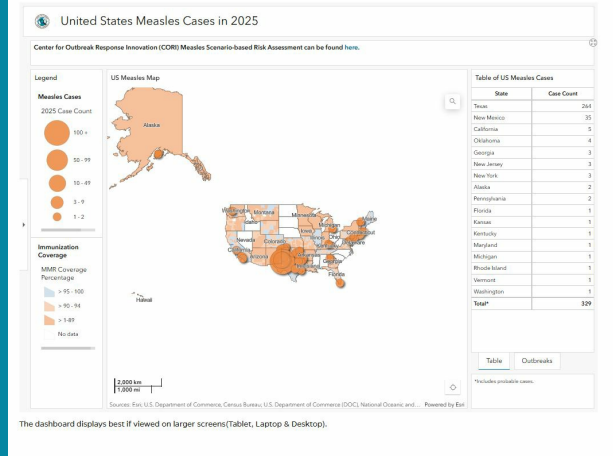
### US 2025 Measles Dashboard

The US 2025 Measles Dashboard is an interactive tool offering real-time insights into the current measles outbreak across the United States.

This dashboard provides up-to-date data on reported cases, county-level immunization coverage where available, and outbreak information, enabling public health officials, healthcare providers, and the general public to monitor and respond effectively to the evolving situation.

Given that herd immunity for measles requires at least **95%** vaccination coverage to prevent sustained transmission, this tool helps identify areas where immunization rates may be below this threshold, increasing the risk of outbreaks.

By presenting critical information in a user-friendly format, the dashboard supports informed decision-making and promotes awareness of measles activity nationwide.



To view the 2025 US Measles Dashboard → [CLICK HERE](#)

STAY CONNECTED

Follow us on LinkedIn

Subscribe



JOHNS HOPKINS  
BLOOMBERG SCHOOL  
of PUBLIC HEALTH

Center for  
Health Security

Johns Hopkins Center for Health Security | 700 E. Pratt Street Suite 900 | Baltimore, MD 21202 US

[Unsubscribe](#) | [Update Profile](#) | [Constant Contact Data Notice](#)