



**JOHNS HOPKINS**  
BLOOMBERG SCHOOL  
*of* PUBLIC HEALTH

**Center for Health Security**

**DIRECT ACCESS NOW AVAILABLE**

## Human Health Risk Assessments

**Stay Informed. Stay Safe**

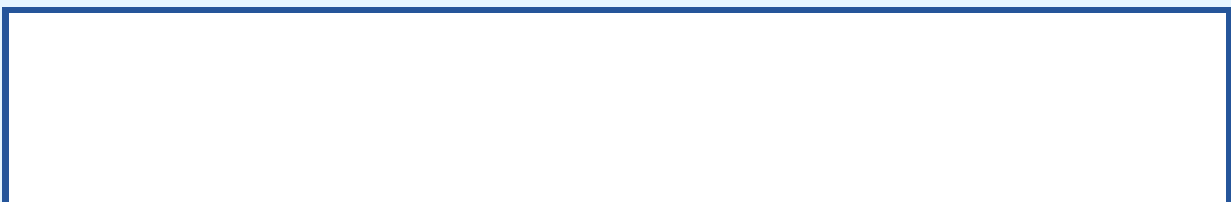
**Mpox**  
**Avian Influenza A(H5)**  
**Measles**

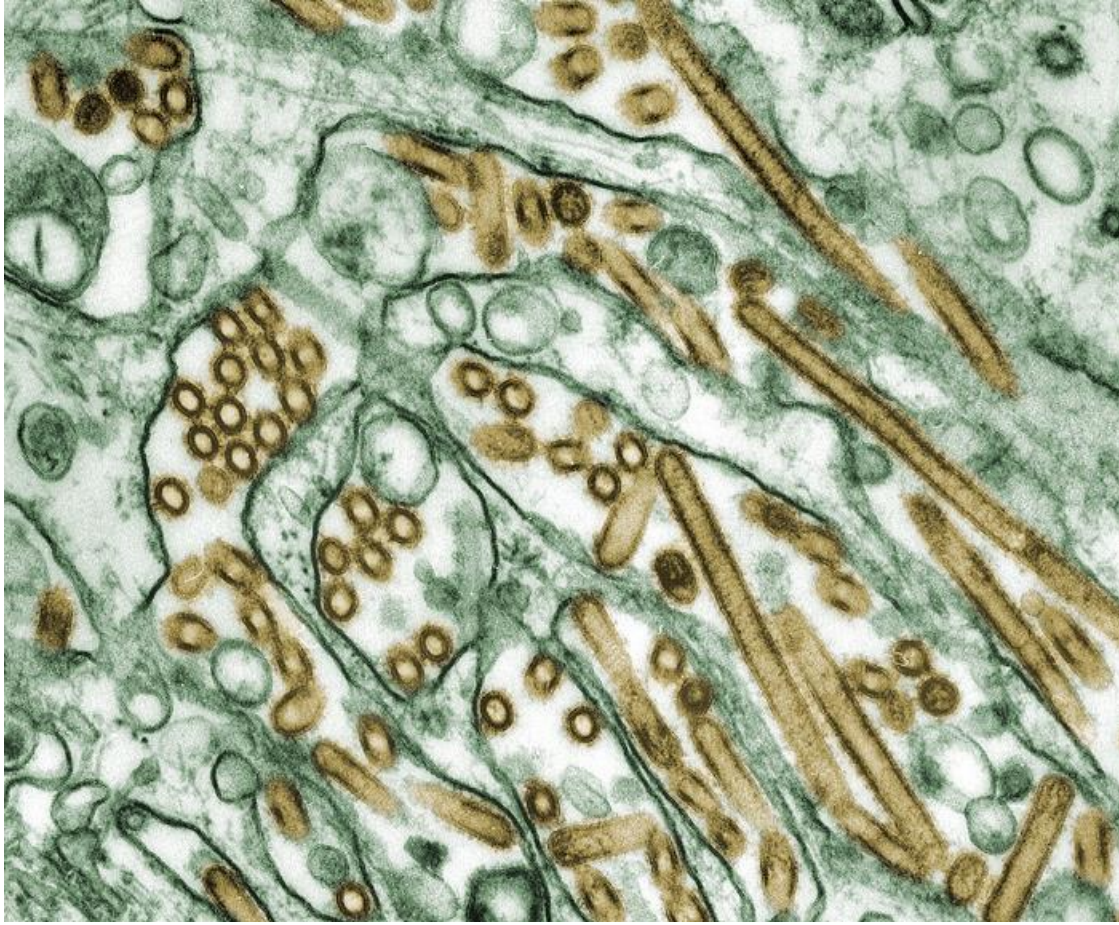
## The Importance of Human Health Risk Assessments

CORI regularly conducts disease-specific scenario-based risk assessments to evaluate the potential human health risks from various public health threats. These assessments provide a structured approach to understanding complex scenarios, estimating risks, and informing future policy and operational actions, even in the face of incomplete or imperfect data.

[Read More & View Assessments](#)

## Current Situation Updates





## H5N1

### **As of October 25, 2024:**

The following critical epidemiological updates since the last risk assessment have informed the increase in risk level to between Scenarios 3 and 4:

- The Centers for Disease Control and Prevention (CDC) has released serology information for the Missouri case, house hold contact, and healthcare contacts, and has determined there is **no evidence of human-to-human transmission** at this time.

[\*\*Read More\*\*](#)



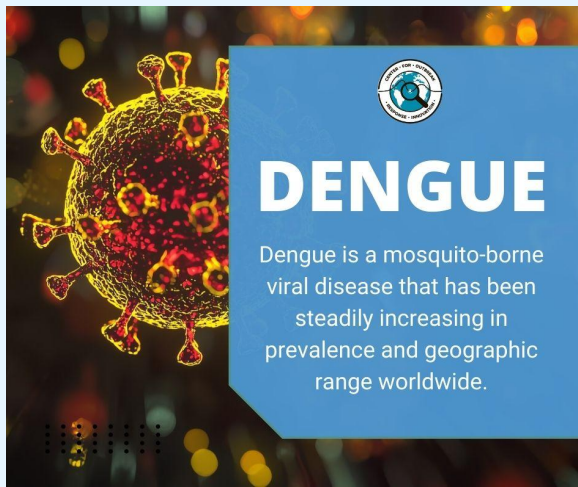
## Mpox

**Situation Update: October 30, 2024**

### Key Updates

- Zimbabwe announced their **first two cases of mpox** (clade unknown) on October 13, 2024.
- **Zambia announced their first case of mpox** (clade unknown) on October 10, 2024.
- The EU's **Health Emergency Preparedness and Response Authority delivered 5,420 doses** of MVA-BN to Rwanda on October 6, 2024.
- There are multiple new and ongoing outbreaks of mpox clades Ia, Ib, and IIb across Africa. **As of October 26, 2024**, a total of 45,674 cases (9,298 confirmed) and 1,014 deaths (case fatality ratio [CFR] of 2.3%) were reported from 18 African Union Member States. DRC accounts for about 80% of cases and deaths.

[Read More](#)



## DENGUE

Dengue is a mosquito-borne viral disease that has been steadily increasing in prevalence and geographic range worldwide.

While historically not endemic to the continental United States, geographic expansion of dengue mosquito habitats due to climate change has resulted in local transmission of dengue in states like Florida and California. These conditions will likely continue to make sustained local transmission possible in a wider range of locations.

[View Resources](#)



## (EEE) EASTERN EQUINE ENCEPHALITIS

Eastern Equine Encephalitis (EEE) virus, though rare, is one of the most severe mosquito-borne diseases in the United States, with a high mortality rate and potential for long-term neurological effects in survivors.

[View Resources](#)

## Welcome to Our New Team Members



**Dr. Fatima Ameaka**  
Senior Analyst



**Sharell Bryant**  
Program Operations  
Coordinator



**Elizabeth Campbell**  
Assistant Scientist



**Oluremilekun Oyefolu**  
Post-Doctoral Fellow

**Meet the CORI Team**



<https://cori.centerforhealthsecurity.org/>

Johns Hopkins Center for Health Security | 700 E. Pratt Street Suite 900 | Baltimore, MD 21202 US

[Unsubscribe](#) | [Update Profile](#) | [Constant Contact Data Notice](#)