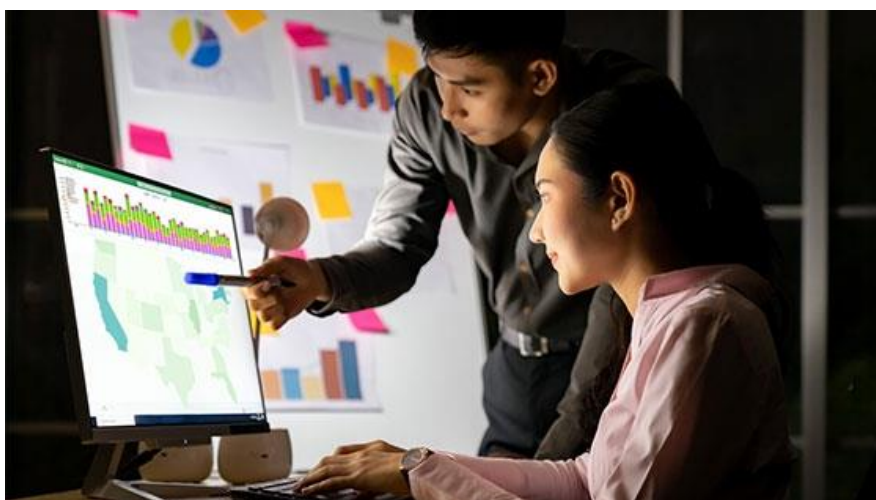




Online Programs for Applied Learning (OPAL) Student Handbook 2023-2024



Master of Applied Science (MAS) Certificates

Contains information for students matriculating in Academic Year 2023 – 2024
The OPAL Program Office reserves the right to change existing rules and/or policies at any time.
Students will be notified of any changes.

MAS / Certificate Student Handbook
 Online Programs for Applied Learning (OPAL)
 Table of Contents

General Information	6
Academic Leadership and OPAL Administration	6
Program Directors.....	6
Central Academic Team Staff and Faculty	8
OPAL Executive Committee	8
OPAL Executive Committee Membership.....	8
Policy and Procedure Memorandum (PPM) for Online Programs in Applied Learning	9
Student Information and Policies	10
Introduction to Online Learning	10
Code of Academic Ethics.....	10
Academic and Research Ethics (ARE) Requirement.....	11
Standards of Academic Performance	11
Time of Completion Requirement	11
Registration.....	12
Student Enrollment and Account Management (SEAM)	12
Student Disability Services.....	12
Health and Well-being Resources.....	13
Student Life.....	13
JHSAP	13
TimelyCare	13
Thriving Campus.....	14
Help and Support	14
Inclusion, Diversity, Anti-Racism, and Equity (IDARE)	14
IDARE at the Johns Hopkins Bloomberg School of Public Health	14
Reporting Discrimination and Harassment at BSPH	14
Email Communication.....	14
Networking Opportunities for OPAL Students and Alumni	15
LinkedIn Program Groups	15
BSPH OPAL Spatial Analysis for Public Health.....	Error! Bookmark not defined.
Program Withdrawals and Continuous enrollment.....	15

Academic Advising	15
OPAL Scholarships.....	16
Graduation	16
Alumni Resources.....	16
Master of Applied Science in Patient Safety and Healthcare Quality.....	17
Overview	17
Advising Faculty	17
MAS Program Competencies	17
General Requirements	18
Standards of Academic Performance	18
Time of Completion Requirement	18
MAS Program in Patient Safety and Healthcare Quality Curriculum and Schedule of Required Courses..	18
Non-credit courses and trainings.....	18
MAS Program Curriculum and Schedule of Required Courses	19
Master of Applied Science in Population Health Management.....	21
Overview	21
Advising Faculty	21
MAS Program Competencies	21
General Requirements	22
Standards of Academic Performance	22
Time of Completion Requirement	22
MAS Program in Population Health Management Curriculum and Schedule of Required Courses	22
Non-credit courses and trainings.....	22
MAS Program Curriculum and Schedule of Required Courses	23
Master of Applied Science in Spatial Analysis for Public Health.....	25
Overview	25
Advising Faculty	25
MAS Program Competencies	25
General Requirements	25
Standards of Academic Performance	26
Time of Completion Requirement	26
MAS Program in Spatial Analysis for Public Health Curriculum and Schedule of Required Courses.....	26
Non-credit courses and trainings.....	26
MAS Program Curriculum and Schedule of Required Courses	27
Master of Applied Science in Community-based Primary Health Care Programs in Global Health	29

Overview	29
Advising Faculty	29
MAS Program Competencies	29
General Requirements	30
Standards of Academic Performance	30
Time of Completion Requirement	31
MAS Program in Community-based Primary Health Care Programs in Global Health Curriculum and Schedule of Required Courses	31
Non-credit courses and trainings.....	31
MAS Program Curriculum and Schedule of Required Courses	31
Master of Applied Science in Global Health Planning and Management.....	33
Overview	33
Advising Faculty	33
MAS Program in Global Health Planning and Management Competencies.....	33
General Requirements	34
Standards of Academic Performance	34
Time of Completion Requirement	35
MAS Program in Global Health Planning and Management Curriculum and Schedule of Required Courses	35
Non-credit courses and trainings.....	35
MAS Program Curriculum and Schedule of Required Courses	35
Master of Applied Science in Humanitarian Health.....	38
Overview	38
Advising Faculty	38
MAS Program Competencies	38
General Requirements	39
Standards of Academic Performance	39
Time of Completion Requirement	39
MAS Program in Humanitarian Health Curriculum and Schedule of Required Courses.....	40
Non-credit courses and trainings.....	40
MAS Program Curriculum and Schedule of Required Courses	40
Certificate in Global Health Practice	42
Overview	42
Advising Faculty	42
Certificate Program Competencies.....	42

General Requirements	43
Standards of Academic Performance	43
Time of Completion Requirement	43
Certificate Program in Global Health Practice Curriculum and Schedule of Required Courses	43
Non-credit courses and trainings.....	43
Certificate Program Curriculum and Schedule of Required Courses	44
Certificate in Population Health Management	45
Overview	45
Advising Faculty	45
Certificate Program Competencies.....	45
General Requirements	45
Standards of Academic Performance	46
Time of Completion Requirement	46
Certificate Program in Population Health Management Curriculum and Schedule of Required Courses .	46
Non-credit courses and trainings.....	46
Certificate Program Curriculum and Schedule of Required Courses	47
Certificate in Spatial Analysis for Public Health	48
Overview	48
Advising Faculty	48
Certificate Program Competencies.....	48
General Requirements	48
Standards of Academic Performance	48
Time of Completion Requirement	49
Certificate Program in Spatial Analysis for Public Health Curriculum and Schedule of Required Courses	49
Non-credit courses and trainings.....	49
Certificate Program Curriculum and Schedule of Required Courses	49
CEPH Accreditation	51
About CEPH.....	51
Foundational Public Health Knowledge.....	51

General Information

Academic Leadership and OPAL Administration

Dr. Elizabeth F. Topper, PhD, MEd, MPH
OPAL Director
etopper@jhu.edu

Christina Potter, MBA
Academic Program Manager
Christina.potter@jhu.edu

Ashley Conroy-Tabrizi, MAT
Sr. Academic Program Coordinator
aconroy2@jh.edu

Aidan White, MLA
Student Services Coordinator
awhit116@jh.edu

Morgan Fredericks, MS
Admissions Officer
mfreder8@jh.edu

Program Directors

MAS in Patient Safety Healthcare and Quality

Program Director

Albert Wu, MD
awu@jhu.edu

MAS and Certificate in Population Health Management

Program Co-Directors

Mark Bittle, DrPH
mbittle1@jhu.edu

David Baker, DrPH
dbaker26@jhu.edu

MAS and Certificate in Spatial Analysis for Public Health

Program Co-Directors

Frank Curriero, PhD
fcurriero@jhu.edu

Tim Shields, MA
tshields@jhu.edu

MAS Humanitarian Health

Program Co-Directors

Paul Spiegel, MD
pbspiegel@jhu.edu

W. Courtland Robinson, PhD
wrobins2@jhu.edu

**MAS Community-Based Primary Health Care Programs in
Global Health, MAS in Global Health Planning and
Management and Certificate in Global Health Practice**

Program Director

William Brieger, DrPH
wbriege1@jhu.edu

Central Academic Team Staff and Faculty

Several administrative staff and faculty members within the OPAL Office help oversee and facilitate the academic programs. They are available to help you navigate the program and the school. The following information is intended to help you understand the roles of each person.

Dr. Elizabeth F. Topper (OPAL Director): Responsible for the management and oversight of all OPAL academic programs. Teaches the OPAL Intermediate Epidemiology course.

Christina Potter (Academic Program Manager): Oversees administrative operations of academic programs in OPAL. Liaison between students, faculty, and administrative offices. Manages graduation processing for MAS students, program extension requests and other special exceptions.

Ashley Conroy-Tabrizi (Sr. Program Coordinator): Assists with day-to-day administrative operations of the OPAL Office and provides administrative support to OPAL students and faculty. Manages content and distribution of the OPAL Gems Newsletter, course schedule updates and certificate completion tracking.

Aidan White (Student Services Coordinator): Supports students with day-to-day questions and issues related to their OPAL program, including registration processes, calendar deadlines and course sequencing.

Morgan Fredericks (OPAL Admissions Officer): Serves as recruiting coordinator for OPAL programs and primary point of contact for prospective OPAL students as they consider applying and work through the process in SOPHAS.

OPAL Executive Committee

The OPAL Academic Programs are governed by the OPAL Executive Committee which is designed to approve relevant policies and procedures and ensure that these are fairly and clearly administered and enforced to protect the interests of students and the overall integrity of the programs. This committee's members are as follows:

OPAL Executive Committee Membership

Elizabeth Topper, OPAL Director, OPAL Instructor

Christina Potter, Academic Program Manager

Albert Wu, Program Director – Patient Safety & Healthcare Quality, OPAL Instructor

William Brieger, Program Director - OPAL Instructor

Mark Bittle, Program Co-Director – Population Health Management, OPAL Instructor

Aruna Chandran, Senior Scientist, OPAL Instructor

David Baker, Program Co-Director – Population Health Management

Cristina Salazar, Academic Program Manager and Instructor – International Health

Frank Curriero, Program Co-Director – Spatial Analysis for Public Health, OPAL Instructor

Lauren Black, Director of Recruitment & Events

Tim Shields, Program Co-Director – Spatial Analysis for Public Health, OPAL Instructor

Jessica Jones, Director of Admissions – Processing and Systems

Kimberly Herl, Associate Director of Finance

Paul Spiegel, Program Co-Director – Humanitarian Health, OPAL Instructor

Sukon Kancharaksa, Senior Scientist, Director of CTL

Policy and Procedure Memorandum (PPM) for Online Programs in Applied Learning

OPAL degree and certificate programs are governed by the [OPAL PPM](#), found in the Bloomberg School portal.

Student Information and Policies

Students must read the [BSPH Student Policies](#) and familiarize themselves with the contents. This section of the Student Handbook highlights some important student policy topics and specific OPAL Office procedures. **Please note that these OPAL procedures DO NOT replace the BSPH student policies.**

Introduction to Online Learning

To be eligible to take an online course, students must complete the [Introduction to Online Learning \(IOL\)](#), which is offered through the Bloomberg School of Public Health in [CoursePlus](#). This non-credit mini course is a pre-requisite for all online courses offered by the School and must be completed prior to the start of the first term of matriculation in your academic program.

Since the School does not permit conditional and/or concurrent enrollment (that is, you must take the online course prior to enrolling in an online class), we require all incoming students to take this non-credit course prior to the AY23-24 first term when they expect to begin their program. For course dates and enrollment information, please visit the [CoursePlus](#) website. **If students have not completed the IOL course prior to the start of first term courses, they will not be able to access course content on the first day of class and may not be able to begin the program as expected.**

Code of Academic Ethics

The faculty and students of the Bloomberg School of Public Health have the joint responsibility for maintaining academic integrity and guaranteeing the high standard of conduct of this institution.

Students enrolled in the Bloomberg School of Public Health assume an obligation to conduct themselves in a manner appropriate to The Johns Hopkins University's mission as an institution of higher education. A student is obligated to refrain from acts which they know, or under the circumstances has reason to know, impair the academic integrity of the University. Violations of academic integrity include, but are not limited to, cheating; plagiarism; knowingly furnishing false information to any agent of the University for inclusion in the academic record; violation of the rights and welfare of animal or human subjects in research; and misconduct as a member of either School or University committees or recognized groups or organizations.

The Academic Ethics Code is contained in the school's Policy and Procedure Memorandum, Students – 1. This can be accessed through the school's [website](#).

All students will be automatically registered for and must complete the school's online, not-for-credit course entitled: Academic and Research Ethics (550.860) during their first term of registration. See the next section for additional information about the course.

To be approved for graduation, the student must have any outstanding charges of misconduct and violations of academic ethics resolved.

All students in an OPAL MAS or Certificate program need to read and follow this code. Failure to adhere to the academic ethics code may result in dismissal from the program, department, and/or school.

For issues or concerns on matters related to academic integrity, please contact Professor Jon Vernick (jvern1@jhu.edu), Director, Office of Academic Integrity (Office HH 594; Tel: 410-955-7982).

Academic and Research Ethics (ARE) Requirement

As noted above, all Master's students are required to take the course **550.860 Academic and Research Ethics (ARE)**. This is an online course for 0 credits that every student is required to take in their first term of matriculation. Students will automatically be enrolled in the course by the Registrar ahead of the first term.

The course can be accessed via [CoursePlus](#) and all students will receive notice of their registration from the [Office of Records and Registration](#). **Students who do not complete the course during their first term of registration will be blocked from registration for courses in the subsequent term.**

The course instructs students on the terms of the academic ethics code and proper conduct of research, and it includes short quizzes which students must pass to be in good standing.

The online ethics course (550.860) can be accessed at: <http://courseplus.jhsph.edu/> under the listing of Extradepartmental Courses.

If you need assistance regarding the ARE course once you have been registered for it, please contact AREHelp@jhu.edu.

Standards of Academic Performance

Letter grades must be earned in all courses used to satisfy requirements, unless otherwise specified (such as pass required for Seminars in Public Health). Please note that courses may be counted only once to fulfill requirements. Students must maintain Satisfactory Academic Progress (SAP) toward obtaining their degree or certificate; receive satisfactory grades of "C" or higher in all required courses and continuously maintain a cumulative Grade Point Average (GPA) of at least 2.75 in order to remain a degree candidate in good standing. **Any student who receives a "D" or "F" in a required course must repeat the course and achieve a grade of "C" or better.**

Any student not meeting these standards will be placed on probationary status. Students must attempt to repeat the courses with insufficient grades when they are next offered (typically in the same term in following academic year for most OPAL courses). In cases where conditions are imposed, the Committee will specify the maximum time allowed for satisfaction of the conditions. Failure to satisfy these conditions may result in termination from the program.

If students receive Federal Loans administered through the [Financial Aid Office](#) there are other academic standards that students must abide by in order to comply with Federal Loan disbursement. Students should reach out to that office to verify any impact that incomplete or failed courses may have on their loans.

Time of Completion Requirement

The MAS programs are designed to be completed in two years, but students have up to four years to finish all program requirements if that is a better timeline for them. **Students who are receiving federal financial aid should follow the two-year completion plan for their degree program in order to maintain the minimum credits per term for eligibility.**

The OPAL Certificate programs are designed to be completed in one year, but students have up to three years to finish all program requirements if that is a better timeline for them.

Students who are approaching their deadline and feel that they are unable to successfully complete all remaining program requirements within three or four years, for the certificate or MAS program respectively, should reach out to their Academic Advisor and the OPAL Office (OPAL-Office@jhu.edu) to discuss scheduling and any options or next steps.

Registration

Students must enroll in at least one (1) for-credit course from the list of program requirements during the initial term of admission (first term), in order to officially matriculate. **If the student is receiving federal financial aid, they must enroll in 6 or more credits each term to maintain eligibility.** Students who are not receiving federal aid may pause enrollment in the program at any time after matriculating and enroll again as their schedule allows. Students must consider course prerequisites when enrolling and planning future registration. Please consult the OPAL Office and/or your Academic Advisor for assistance in updating your course schedule.

Students will register themselves directly in [SIS Self-Service](#), beginning with the initial matriculation into the program (first term of courses in the first year of their academic program): <https://sis.jhu.edu/sswf/>.

Student Enrollment and Account Management (SEAM)

The Office of Student Enrollment and Account Management (SEAM) has posted FAQs on their website to assist students with general requests related to registration, financial aid, and student accounts. They have developed an [online form](#) for students to submit requests for assistance with registration, financial aid, and student accounts for special circumstances not covered by the FAQs. This form will enable SEAM to assign and answer requests more efficiently, by connecting you to the appropriate staff member who can best assist you. Once you complete the form, you will receive confirmation and a member of our team will be in touch.

Student Disability Services

The Johns Hopkins University does not discriminate on the basis of race, color, gender, religion, sexual orientation, national or ethnic origin, age, disability, marital status, or veteran status in any student program or activity administered by the University or regarding admissions or employment. The University provides appropriate, necessary, and reasonable accommodation to qualified students, faculty, and staff who are disabled.

In accordance with Section 504 of the Rehabilitation Act of 1973 and the Americans with Disabilities Act of 1990 (ADA), the University provides appropriate, necessary, and reasonable accommodation to qualified students who are disabled. When generally accessible facilities do not adequately accommodate a specific disability, the University makes program and/or facility adjustments as are reasonably necessary to assure individual access.

For individual-specific accommodations, individuals are required to provide from an appropriate professional diagnostician a comprehensive evaluation of their specific disability and recommended accommodations based upon their current level of functioning in an academic or employment setting. This documentation regarding students should be forwarded directly to the school's disability coordinator immediately after the school's offer of admission or as soon as the student is enrolled. The University reserves the right to request additional information from an individual's health care provider, or a health care provider that it designates, to verify appropriate accommodations.

Costs for personal attendants, personally prescribed devices, and services for personal use or study above and beyond what the University provides is the responsibility of the student.

Questions regarding this policy should be referred to the School's Student Disability Services director, who may be reached at 410-955-3034; fax 410-502-9809; email sds-jhu@jhu.edu.

[Student Disability Services](#) at the Bloomberg School of Public Health is located at 2017 East Monument St. Additionally, the University Affirmative Action Office is located on the Homewood Campus: 205 Garland Hall, 410- 516-8075.

Health and Well-being Resources

Johns Hopkins University is committed to helping you thrive personally and professionally and providing an environment that supports your health and well-being. We encourage you to seek support from the following JHU resources, particularly if you are experiencing anxiety, stress, depression, or other concerns related to your health and well-being.

Student Life

[The Office of Student Life](#) at BSPH is available to assist students by providing support in navigating resources pertaining to personal and academic challenges. If you would like to schedule a one-on-one appointment with a staff member in the Office of Student Life, you can contact the Office of Student Life at jhsph-studentlife@jhu.edu or (410) 502-2487.

JHSAP

Students can also contact the [Johns Hopkins Student Assistance Program \(JHSAP\)](#) which provides resources to assist students across the Johns Hopkins community with any pressures and difficulties they may face during their academic careers. Getting help is free, convenient, and confidential.

Counselors are available to speak with you 24 hours a day, 7 days a week at (443) 287-7000. Services include short-term counseling, crisis response, healthy relationship support, school-life coaching and adjustment, and educational workshops.

TimelyCare

Johns Hopkins University now offers [TimelyCare](#), a free virtual mental telehealth program that allows students to access these services 24/7. [TimelyCare](#) offers three kinds of services:

1. **Talk Now** is on-demand access to a mental health professional 24/7. Its goal is to get students connected to a mental health provider within three to seven minutes. Students can discuss any concern, from feeling down to being anxious due to academic, social, or personal demands.
2. **Scheduled Counseling** services are 45-minute appointments with a licensed counselor to talk about anything including depression, anxiety, grief, addiction, and more. Students can pick a counselor based on their schedules. Students are limited to 12 visits per year (6 in the fall and 6 in the spring).
3. **Psychiatry visits** require a referral. For more information on how to access Psychiatry services, please contact UHS, JHSAP, or call [TimelyCare](#) Customer Support at 833-4-TIMELY.

[TimelyCare](#) also provides access to free prescription cards for all students and other prescription services, digital self-care sessions. All [TimelyCare](#) services are available in the United States, but only

Talk Now is available outside the of the United States as long as the TimelyCare app is downloaded prior to travel. Download the TimelyCare app, visit the visit timelycare.com/jhu and use your Hopkins email address to log in, or call at (833) 484-6359 to access this service.

Thriving Campus

JHU has partnered with [Thriving Campus](#) to help make it easier for students to find care in the broader community around campus. [This website](#) allows students to find counselors, therapists, psychologists, or psychiatrists based on location. Students can search for clinicians based on insurance, practice areas, telehealth options, approaches, genders, community expertise, and more.

Help and Support

Students in need of support regarding sexual assault and/ or sexual violence can find resources and information on the University's Sexual Assault Response and Prevention webpage, which can be accessed [here](#).

If you or someone you know is in crisis, call JHSAP at (443) 287-7000 for help immediately. In an emergency, call 911 or go to the nearest emergency room.

Inclusion, Diversity, Anti-Racism, and Equity (IDARE)

IDARE at the Johns Hopkins Bloomberg School of Public Health

BSPH has established an [Office of Inclusion, Diversity, Anti-Racism, and Equity \(IDARE\)](#) to act as a resource and support for prioritizing the cultivation of a diverse, inclusive, and nurturing environment for students, faculty, and staff. The Office of IDARE has developed an [IDARE Action Plan](#), which complements the framework and eight priorities that aim to address racism and build an anti-racist culture within our school community.

Reporting Discrimination and Harassment at BSPH

If you would like to report an incidence of discrimination and/or harassment at BSPH there are two avenues to do so. One is through the [Office of Institutional Equity \(OIE\)](#) and the other is through Safe@Hopkins. Anything reported through these avenues will be investigated.

Through the Office of Institutional Equity, you can report cases of discrimination and harassment, cases of sexual misconduct, and issues related to religious accommodations. Please note that OIE is not a confidential resource, however, it is discreet and only shares information necessary to respond to reports, carry out its assessments and investigations, and comply with applicable law.

Safe@Hopkins includes a 24-hour/seven-day-a-week compliance hotline – which can be accessed both online and by phone at 844-SPEAK2US (844-773-2528). While Safe@Hopkins is for reporting unethical and illegal acts (broadly defined), suspected cases of discrimination and/or harassment can be reported here. Safe@Hopkins also provides the option to report anonymously.

Email Communication

All email communication is sent to a student's JHU email address only. This includes official communication from the OPAL Office. Students must assume full responsibility for regularly monitoring their JHU email and responding in a timely manner. Official communication from the OPAL Office will only go to JHU emails, not personal email accounts.

When corresponding with faculty by email, please make sure to add a descriptive subject line and note if the content requires an urgent response. Be sure to notify your faculty and teaching team ASAP if any issues arise during your course that could impact your participation and/or submission of assignments.

Networking Opportunities for OPAL Students and Alumni

LinkedIn Program Groups

We have established a LinkedIn group for each of the OPAL program areas in order to strengthen connections between current students, faculty and alumni of OPAL programs, as well as to facilitate student-to-student peer networking.

Participation is voluntary, but we encourage you to join this professional networking community.

[BSPH OPAL Patient Safety and Healthcare Quality](#)

[BSPH OPAL Population Health Management](#)



You can also find OPAL Programs on [Facebook!](#)

Program Withdrawals and Continuous enrollment

The Leave of Absence (LOA) process/status is used for full-time students and typically will not apply for students in OPAL MAS or Certificate programs. Once you have matriculated in your academic program, if you know that you will be unable to enroll in courses for a significant period (three or more terms), please contact the OPAL Office at OPAL-Office@jhu.edu to discuss whether you should request to be temporarily withdrawn. The Office can have you reinstated in good standing in the program when you are ready to enroll again and can work with your Academic Advisor to assist you in building an updated schedule.

Since the OPAL academic programs are offered on a part-time basis, they do not have a requirement for continuous enrollment (registering for courses in terms 1-4 each academic year). However, if a U.S. student is receiving federal financial aid, they are required to register each term for a minimum of 6 credits per term to remain eligible.

Academic Advising

Master's degree programs in OPAL are a mixture of didactic coursework, independent reading, and the preparation of a culminating project (Integrative Activity). OPAL Certificate programs do not require completion of an Integrative Activity course. While the academic requirements for each degree (and certificate) program are set, academic and professional questions may arise during the program. To assist with this, each student is assigned an academic faculty advisor, who has the responsibility of serving as a guide and mentor. Students still have personal accountability for a successful graduate program, but academic advisors provide support to make the experience as smooth as possible.

Advisors will be assigned upon initial matriculation, and you can view your advisor(s) in SIS Self-Service by logging in and selecting Registration from the left-hand menu, then Program of Study.

OPAL Scholarships

The OPAL scholarship will be awarded each term, after students have enrolled and before the term begins. Scholarships are awarded via a manual process in SIS so students will not see the funds in their account immediately upon enrollment. Scholarships are applied on a per credit basis, during each term that a student is enrolled.

The scholarship only applies for courses that are required by the academic program and will be awarded throughout the duration of the program. Students are able to enroll in courses outside of OPAL (if they are not otherwise restricted), with the understanding that they will pay the regular part-time tuition rate and the course(s) will not apply to their OPAL academic program. The OPAL scholarship rate is typically confirmed each spring for the upcoming academic year, when the new tuition rates are released.

Graduation

MAS graduates are included in the Bloomberg School of Public Health Convocation as well as the Johns Hopkins University Commencement held each May. Graduates from August, December and May of that academic year are invited to participate in the ceremonies.

The OPAL Office will share details with students when available, and you should also watch for communications from the Registrar's Office. **Students must RSVP to attend the ceremonies and all students who walk during Convocation must wear regalia. Students must have completed all required credit and non-credit courses in order to participate in graduation ceremonies.**

Alumni Resources

Graduates of the OPAL MAS programs are alumni of the Bloomberg School of Public Health, and Johns Hopkins University, and may take advantage of many alumni benefits. For complete information on life as an alumnus, visit the [Johns Hopkins Alumni Association](#). This site will answer common questions related to your JHED ID, continuing access to online library resources, ordering transcripts, staying connected to student communities, and so much more.

Master of Applied Science in Patient Safety and Healthcare Quality

Overview

The Patient Safety and Healthcare Quality master's program is an interdisciplinary degree offered by the Johns Hopkins University. It is a first-of-its-kind collaboration between the Johns Hopkins Bloomberg School of Public Health, Johns Hopkins School of Medicine, Johns Hopkins School of Nursing and the Armstrong Institute for Patient Safety and Quality. It combines coursework from JHU's top-ranked schools with the Armstrong Institute's pioneering advances in patient safety. This online program is designed to educate students in the transformative mechanisms and evidence-based protocols that reduce preventable patient harm and improve clinical outcomes.

Advising Faculty

One or more of the faculty listed below will serve as Academic Advisor to each of the students in the MAS program. Students can view their Advisor in [SIS Self-Service](#), by logging in and selecting **Registration** from the left-hand menu, then **Program of Study**.

Albert Wu, MD, Professor and Program Director
for MAS in Patient Safety and Healthcare Quality
awu@jhu.edu

Matthew Austin, PhD, Assistant Professor
jmaustin@jhmi.edu

Cheryl Connors, MS, Associate
ccicio1@jhmi.edu

Paula Kent, DrPH, MSN, MBA, Associate Faculty
pkent2@jhmi.edu

Julia Kim, MD, MPH, Assistant Professor
jkim315@jhmi.edu

Michael Rosen, PhD, Assistant Professor
mrosen44@jhmi.edu

MAS Program Competencies

By the end of the program, students should be able to:

1. Describe several frameworks and theories for assessing and improving the quality of care
2. Describe current key policy and programmatic areas in quality of care
3. Describe how to assess quality of care for a medical condition
4. Describe key elements of published quality assessment and improvement studies
5. Articulate how to develop a workable quality improvement and evaluation plan
6. Recognize the extent of problems in patient safety in medical care
7. Describe the role of various systems and factors in creating safety and causing errors and adverse events
8. Discuss problems and issues in measuring and reporting safety
9. Demonstrate knowledge of the basics of conducting an incident investigation and disclosing an adverse event
10. Design solutions to improve patient safety
11. Articulate the ethical, legal, and regulatory implications related to patient safety

General Requirements

A minimum of 48.5 credits in formal coursework must be earned, with sufficient passing grades (“C” or higher) and an overall GPA of 2.75 or higher. Required courses are noted in the curriculum section. Students can complete the degree program in two years by following the recommended course plan (two courses each term), but they can take up to four years to finish all degree requirements.

Students must complete several free, non-credit training courses prior to the start of the academic program, or during the first term of enrollment. Details about these training courses will be sent via email and posted on the OPAL Student Resources site in [CoursePlus](#).

Standards of Academic Performance

Letter grades must be earned in all courses used to satisfy requirements, unless otherwise specified (such as pass required for Seminars in Public Health). Please note that courses may be counted only once to fulfill requirements. Students must maintain Satisfactory Academic Progress (SAP) toward obtaining their degree or certificate; receive satisfactory grades of “C” or higher in all required courses and continuously maintain a cumulative Grade Point Average (GPA) of at least 2.75 in order to remain a degree candidate in good standing. **Any student who receives a “D” or “F” in a required course must repeat the course and achieve a grade of “C” or better.**

Any student not meeting these standards will be placed on probationary status. Students must attempt to repeat the courses with insufficient grades when they are next offered (typically in the same term in following academic year for most OPAL courses). In cases where conditions are imposed, the Committee will specify the maximum time allowed for satisfaction of the conditions. Failure to satisfy these conditions may result in termination from the program.

If students receive Federal Loans administered through the [Financial Aid Office](#) there are other academic standards that students must abide by in order to comply with Federal Loan disbursement. Students should reach out to that office to verify any impact that incomplete or failed courses may have on their loans.

Time of Completion Requirement

The MAS program is designed to be completed in two years, but students have up to four years to finish all program requirements if that is a better timeline for them. Students who are receiving federal financial aid should follow the two-year completion plan in order to maintain the minimum credits per term for eligibility.

Students who are approaching their deadline and feel that they are unable to successfully complete all remaining program requirements within four years should reach out to their Academic Advisor and the OPAL Office (OPAL-Office@jhu.edu) to discuss possible scheduling and any options or next steps.

MAS Program in Patient Safety and Healthcare Quality Curriculum and Schedule of Required Courses

Non-credit courses and trainings

In addition to program-specific credit courses (outlined below), all BSPH students are required to complete a set of non-credit courses and trainings. Students will be emailed detailed information

regarding these trainings and they **MUST be completed by the end of first term at the latest**. Please see the list below for all MAS program requirements:

- Introduction to Online Learning (IOL), completed prior to your first term in the program
- Academic and Research Ethics (ARE), must be completed during your first term, or a registration hold may be placed on your account
- Sexual Harassment and Sexual Violence Training
- Required Module on Plagiarism
- Johns Hopkins Opioid Training
- SOURCE: How History Impacts our Work Module
- Acknowledgement and Module for Indigenous Land and Peoples

MAS Program Curriculum and Schedule of Required Courses

In addition to the 2-credit, 3-credit, and 4-credit courses outlined below for Year 1 and 2, the MAS program curriculum requires that students complete **552.612 Essentials of One Health** (0.5 credit). This course is a requirement for graduation and students will not be awarded the MAS degree until all requirements are completed, including this one. 552.612 *Essentials of One Health* is included in the list below, at the beginning of Year 1 and Year 2, but may be taken in any term offered (currently offered in terms 1, and 4).

Courses are listed below in sequential order, for students who are following a two (2)-year plan. Courses are only offered in the terms indicated. Some of the courses listed below have specific prerequisite courses. Your Academic Advisor can provide guidance if you wish to follow a 3-year or 4-year completion plan. If you need to take courses out of sequence, please verify that you have met any necessary prerequisites before enrolling. If you have any questions about scheduling and prerequisites, please contact your Academic Advisor or the OPAL Office.

Year	Term	Course Number	Course Title	Credits
1	1	552.612	Essentials of One Health	.5
1	1	603.711.86	Science of Patient Safety*	4
1	1	600.601.86	Seminars in Public Health	2
1	2	603.701.86	Introduction to Quality of Care for Practitioners*	4
1	2	603.651.86	Case Studies in Quality and Safety*	2
1	3	600.701.86	Introduction to Epidemiology	4
1	3	600.612.86	Professional Development Workshop: Writing for Results	2
1	4	600.709.86	Statistical Concepts in Public Health	3
1	4	603.721.86	Leadership for Change*	3

Year	Term	Course Number	Course Title	Credits
2 (if not taken earlier)	1 (or 4)	552.612	Essentials of One Health	.5
2	1	600.710.86	Statistical Concepts in Public Health II	3
2	1	603.702.86	Quality Improvement Tools*	3
2	2	600.702.86	Intermediate Epidemiology	4

2	2	600.602.86	Seminars in Public Health: Advanced Topics	2
2	3	603.731.86	Measurement and Evaluation in Quality & Safety*	4
2	3	603.751.86	Infection Prevention in Healthcare Settings*	2
2	4	603.880.86	Patient Safety and Healthcare Quality Integrative Activity	4
2	4	603.931.86	Measurement Lab in Quality & Safety**	2

IMPORTANT NOTE:** The courses marked above **MUST BE COMPLETED** prior to enrolling in the 603.880 Integrative Activity course in a student's final term of the program. *603.931 *Measurement Lab in Quality & Safety*** can be taken prior to 603.880, or concurrently with it.

Master of Applied Science in Population Health Management

Overview

The health care services delivery landscape is rapidly transforming. New competencies are required to effectively navigate and succeed under value-based reimbursement models and population-oriented health delivery initiatives. This interdisciplinary degree program provides experienced professionals a comprehensive approach to developing population health management systems and strategies and leading transformation to value-based, population-focused care delivery.

Advising Faculty

One or more of the faculty listed below will serve as Academic Advisor to each of the students in the MAS program. Students can view their Advisor in [SIS Self-Service](#), by logging in and selecting **Registration** from the left-hand menu, then **Program of Study**.

Mark Bittle, DrPH
Senior Scientist and Program Director
mbittle1@jhu.edu

David Baker, DrPH, MBA
Assistant Professor - Adjunct
dbaker26@jhmi.edu

Megan Priolo, DrPH
Associate
mmaguir5@jhu.edu

Debra Thompson, DNP
Associate
dthomp79@jhu.edu

MAS Program Competencies

By the end of the program, students should be able to:

1. Apply the essentials of public health practice to identifying determinants of population health that impact health outcomes in a community and design low-cost interventions;
2. Apply leadership in the formation and management of health systems organizations that consist of, and rely upon, diverse stakeholders in the organization and delivery of community-based systems of care;
3. Communicate effectively to constituencies both within and outside of the health system;
4. Articulate and apply frameworks for collecting, analyzing and using data to inform decisions, facilitate care coordination and improve health outcomes of targeted populations within and outside the health system;
5. Support state and local public health agency efforts in assessing health needs, quality of services and strategies for health services research.
6. Evaluate payment systems and risk mitigation strategies and develop new structures to function under evolving value-based payment models emphasizing low-cost, high-quality care;
7. Describe new methods for assessing the health needs of a population, working with stakeholders to establish meaningful targets and applying scientific frameworks for measuring and reporting progress;
8. Apply social and behavioral constructs to develop and enhance community engagement and involvement to improve health;
9. Engage in a population health practicum designed to allow the student to work on a project to integrate clinical care and public health practice around an identified community need.

General Requirements

A minimum of 50 credits in formal coursework must be earned, with sufficient passing grades (“C” or higher) and an overall GPA of 2.75 or higher. Required courses are noted in the curriculum section. Students can complete the degree program in two years by following the recommended course plan (two courses each term), but they can take up to four years to finish all degree requirements.

Students must complete several free, non-credit training courses prior to the start of the academic program, or during the first term of enrollment. Details about these training courses will be sent via email and posted on the OPAL Student Resources site in [CoursePlus](#).

Standards of Academic Performance

Letter grades must be earned in all courses used to satisfy requirements, unless otherwise specified (such as pass required for Seminars in Public Health). Please note that courses may be counted only once to fulfill requirements. Students must maintain Satisfactory Academic Progress (SAP) toward obtaining their degree or certificate; receive satisfactory grades of “C” or higher in all required courses and continuously maintain a cumulative Grade Point Average (GPA) of at least 2.75 in order to remain a degree candidate in good standing. **Any student who receives a “D” or “F” in a required course must repeat the course and achieve a grade of “C” or better.**

Any student not meeting these standards will be placed on probationary status. Students must attempt to repeat the courses with insufficient grades when they are next offered (typically in the same term in following academic year for most OPAL courses). In cases where conditions are imposed, the Committee will specify the maximum time allowed for satisfaction of the conditions. Failure to satisfy these conditions may result in termination from the program.

If students receive Federal Loans administered through the [Financial Aid Office](#) there are other academic standards that students must abide by in order to comply with Federal Loan disbursement. Students should reach out to that office to verify any impact that incomplete or failed courses may have on their loans.

Time of Completion Requirement

The MAS program is designed to be completed in two years, but students have up to four years to finish all program requirements if that is a better timeline for them. Students who are receiving federal financial aid should follow the two-year completion plan in order to maintain the minimum credits per term for eligibility.

Students who are approaching their deadline and feel that they are unable to successfully complete all remaining program requirements within four years should reach out to their Academic Advisor and the OPAL Office (OPAL-Office@jhu.edu) to discuss possible scheduling and any options or next steps.

MAS Program in Population Health Management Curriculum and Schedule of Required Courses

Non-credit courses and trainings

In addition to program-specific credit courses (outlined below), all BSPH students are required to complete a set of non-credit courses and trainings. Students will be emailed detailed information

regarding these trainings and they **MUST be completed by the end of first term at the latest**. Please see the list below for all MAS program requirements:

- Introduction to Online Learning (IOL), completed prior to your first term in the program
- Academic and Research Ethics (ARE), must be completed during your first term, or a registration hold may be placed on your account
- Sexual Harassment and Sexual Violence Training
- Required Module on Plagiarism
- Johns Hopkins Opioid Training
- SOURCE: How History Impacts our Work Module
- Acknowledgement and Module for Indigenous Land and Peoples

MAS Program Curriculum and Schedule of Required Courses

Courses are listed below in sequential order, for students who are following a two (2)-year plan. Courses are only offered in the terms indicated. Some of the courses listed below have specific prerequisite courses. Your Academic Advisor can provide guidance if you wish to follow a 3-year or 4-year completion plan. If you need to take courses out of sequence, please verify that you have met any necessary prerequisites before enrolling. If you have any questions about scheduling and prerequisites, please contact your Academic Advisor or the OPAL Office.

Students who successfully complete all year one courses with grades of “C” or better, and overall GPA of 2.75 or higher will also be awarded the Certificate in Population Health Management.

Year	Term	Course Number	Course Title	Credits
1	1	602.631.86	Essentials of Population Health Mangement	3
1	1	602.651.86	Principles and Applications of Advance Payment Models in Population Health Management	3
1	2	602.671.86	Collective Impact: Developing and Leading Community Partnerships to Improve Population Health	3
1	2	602.681.86	Accountable Care: Assessing Quality and Effectiveness of Population Health Initiatives	3
1	3	600.701.86	Introduction to Epidemiology	4
1	3	602.731.86	Population and Consumer Health Informatics	3
1	4	600.709.86	Statistical Concepts in Public Health	3
1	4	602.691.86	Managing Health Across the Continuum: Contemporary Models of Disease Prevention and Care Management	3

Year	Term	Course Number	Course Title	Credits
2	1	602.701.86	Applied Concepts and Foundations of High Performance for Population Health	3
2	1	602.711.86	Health Behavior: Improving Health through Health Education/Promotion	3
2	2	602.721.86	Organizing for Public Health: A Systems Approach	2

2	2	602.741.86	Behavioral Economics of Risk: Value-Based Payment Methods and Incentives	4
2	3	602.751.86	The Built Environment: Influences and Challenges to Improving Population Health	3
2	3	602.761.86	Valued-based Concepts of Socially-Responsible Leadership	3
2	4	602.880.86	Population Health Management Integrative Activity	4
2	4	604.771.86	Social and Cultural Basis for Community and Primary Health Programs	3

***IMPORTANT NOTE: All year one courses must be completed prior to enrolling in year two courses. All courses must be completed prior to enrolling in 602.880 Integrative Activity.**

Master of Applied Science in Spatial Analysis for Public Health

Overview

The Master of Applied Science in Spatial Analysis for Public Health is a fully online degree program offered by the Johns Hopkins Bloomberg School of Public Health. The curriculum prepares students to effectively collect, map and interpret geographic information to test and refine hypotheses to answer a set of questions within the public health sector.

Location information, now routinely collected with health data and also obtainable from advancing technologies, is providing a gateway for researchers and practitioners to incorporate the power of geography into public health. Maps have become a powerful and popular mechanism for public health research and practice, not only for conveying information and synthesizing data from multiple sources, but for leading to new and novel directions for analyzing and interpreting public health data.

The MAS program in Spatial Analysis for Public Health is a STEM-designated program. STEM programs are focused in science, technology, engineering and math.

Advising Faculty

One or more of the faculty listed below will serve as Academic Advisor to each of the students in the MAS program. Students can view their Advisor in [SIS Self-Service](#), by logging in and selecting **Registration** from the left-hand menu, then **Program of Study**.

Frank Curriero, Program Co-Director – Spatial Analysis for Public Health, OPAL Instructor
fcurriero@jhu.edu

Tim Shields, Program Co-Director – Spatial Analysis for Public Health, OPAL Instructor
tshields@jhu.edu

MAS Program Competencies

By the end of the program, students should be able to:

1. Interpret and critique epidemiologic studies addressing public health problems
2. Apply measures of morbidity and mortality to the evaluation and comparison of the health of populations
3. Synthesize how geography affects public health
4. Obtain and transfer information from spatial data technologies into a database appropriate for mapping
5. Utilize a geographic information system to map and spatially integrate public health related databases
6. Analyze and interpret maps using tools from the field of spatial statistics to describe and interpret distributions of health outcomes in a population
7. Design and implement a spatial analysis protocol for addressing a public health problem

General Requirements

A minimum of 50.5 credits in formal coursework must be earned, with sufficient passing grades (“C” or higher) and an overall GPA of 2.75 or higher. Required courses are noted in the curriculum section.

Students can complete the degree program in two years by following the recommended course plan (two courses each term), but they can take up to four years to finish all degree requirements.

Students must complete several free, non-credit training courses prior to the start of the academic program, or during the first term of enrollment. Details about these training courses will be sent via email and posted on the OPAL Student Resources site in [CoursePlus](#).

Standards of Academic Performance

Letter grades must be earned in all courses used to satisfy requirements, unless otherwise specified (such as pass required for Seminars in Public Health). Please note that courses may be counted only once to fulfill requirements. Students must maintain Satisfactory Academic Progress (SAP) toward obtaining their degree or certificate; receive satisfactory grades of “C” or higher in all required courses and continuously maintain a cumulative Grade Point Average (GPA) of at least 2.75 in order to remain a degree candidate in good standing. **Any student who receives a “D” or “F” in a required course must repeat the course and achieve a grade of “C” or better.**

Any student not meeting these standards will be placed on probationary status. Students must attempt to repeat the courses with insufficient grades when they are next offered (typically in the same term in following academic year for most OPAL courses). In cases where conditions are imposed, the Committee will specify the maximum time allowed for satisfaction of the conditions. Failure to satisfy these conditions may result in termination from the program.

If students receive Federal Loans administered through the [Financial Aid Office](#) there are other academic standards that students must abide by in order to comply with Federal Loan disbursement. Students should reach out to that office to verify any impact that incomplete or failed courses may have on their loans.

Time of Completion Requirement

The MAS program is designed to be completed in two years, but students have up to four years to finish all program requirements if that is a better timeline for them. Students who are receiving federal financial aid should follow the two-year completion plan in order to maintain the minimum credits per term for eligibility.

Students who are approaching their deadline and feel that they are unable to successfully complete all remaining program requirements within four years should reach out to their Academic Advisor and the OPAL Office (OPAL-Office@jhu.edu) to discuss possible scheduling and any options or next steps.

MAS Program in Spatial Analysis for Public Health Curriculum and Schedule of Required Courses

Non-credit courses and trainings

In addition to program-specific credit courses (outlined below), all BSPH students are required to complete a set of non-credit courses and trainings. Students will be emailed detailed information regarding these trainings and they **MUST be completed by the end of first term at the latest**. Please see the list below for all MAS program requirements:

- Introduction to Online Learning (IOL), completed prior to your first term in the program

- Academic and Research Ethics (ARE), must be completed during your first term, or a registration hold may be placed on your account
- Sexual Harassment and Sexual Violence Training
- Required Module on Plagiarism
- Johns Hopkins Opioid Training
- SOURCE: How History Impacts our Work Module
- Acknowledgement and Module for Indigenous Land and Peoples

MAS Program Curriculum and Schedule of Required Courses

In addition to the 2-credit, 3-credit, and 4-credit courses outlined below for Year 1 and 2, the MAS program curriculum requires that students complete **552.603 The Role of Qualitative Methods and Science in Describing and Assessing a Population's Health** (0.5 credit). This course is a requirement for graduation and students will not be awarded the MAS degree until all requirements are completed, including this one. 552.603 The Role of Qualitative Methods and Science in Describing and Assessing a Population's Health *Essentials of One Health* is included in the list below, at the beginning of Year 1 and Year 2, but may be taken in any term offered (currently offered in summer term, 1, 2 and 3).

Courses are listed below in sequential order, for students who are following a two (2)-year plan. Courses are only offered in the terms indicated. Some of the courses listed below have specific prerequisite courses. Your Academic Advisor can provide guidance if you wish to follow a 3-year or 4-year completion plan. If you need to take courses out of sequence, please verify that you have met any necessary prerequisites before enrolling. If you have any questions about scheduling and prerequisites, please contact your Academic Advisor or the OPAL Office.

Year	Term	Course Number	Course Title	Credits
1	1	552.603	The Role of Qualitative Methods and Science in Describing and Assessing a Population's Health	.5
1	1	601.731.86	Spatial Analysis for Public Health*	4
1	1	600.601.86	Seminars in Public Health	2
1	2	601.732.86	Spatial Data Technologies for Mapping*	4
1	2	600.602.86	Seminars in Public Health: Advanced Topics	2
1	3	600.701.86	Introduction to Epidemiology*	4
1	3	600.612.86	Professional Development Workshop: Writing for Results	2
1	4	600.711.86	Public Health Statistics I*	4
1	4	601.931.86	Spatial Analysis Lab 1	2

Year	Term	Course Number	Course Title	Credits
2 (if not taken earlier)	1 (or 2,3, summer)	552.603	The Role of Qualitative Methods and Science in Describing and Assessing a Population's Health	.5
2	1	600.712.86	Public Health Statistics II*	4
2	1	600.711.86	Professional Development Workshops: Effective Online Searching	3

2	2	600.702.86	Intermediate Epidemiology*	4
2	2	601.932.86	Spatial Analysis Lab 2	2
2	3	601.733.86	Applied Spatial Statistics*	4
2	3	601.805.86	Spatial Analysis Journal Club	2
2	4	601.734.86	Spatial Applications*	4
2	4	601.880.86	Spatial Analysis for Public Health Integrative Activity*	4

***IMPORTANT NOTE: The 4-credit courses (marked with an *) MUST BE COMPLETED in the order shown above and the 601.880 Integrative Activity course must be taken in a student's final term of the program.**

Master of Applied Science in Community-based Primary Health Care Programs in Global Health

Overview

The Master of Applied Science in Community-based Primary Healthcare builds on the community health strengths of the Bloomberg School and the Department of International Health, which provides unmatched opportunities for advanced training, focuses on both local and global issues, and prepares students to address public health problems through multidisciplinary approaches that apply the latest scientific knowledge.

The program will provide students with the skills to plan, implement and evaluate community-based public health programs and services in countries throughout the world. Our focus on Primary Health Care is in keeping with the Alma Ata Declaration that is built on active community participation. We hope that as a results of this course students will be able to involve the communities where they work in being active partners in the provision of their own health care.

Advising Faculty

The faculty listed below will serve as Academic Advisor to each of the students in the MAS program. Students can view their Advisor in [SIS Self-Service](#), by logging in and selecting **Registration** from the left-hand menu, then **Program of Study**.

William Brieger, DrPH
Professor and Program Director, MAS and
Certificate programs in Global Health
wbriege1@jhu.edu

MAS Program Competencies

Competencies for this degree build on the Association of Schools of Public Health (ASPH) Global Health Competency Model. Upon completion of the Master of Applied Science in Community-based Primary Health Care, students will be able to:

A. Core Global Health Practice Competencies

1. Apply capacity building processes to global health programming in low and middle-income countries.
2. Identify and collaborate with a wide range of stakeholders whose active participation is required for successful global health programming at community, sub-national, national and regional levels.
3. Apply ethical reasoning to the policy and programming decisions needed for designing and implementing global health programs in low and middle-income countries.
4. Exhibit a health equity and social justice lens in the design and conduct of global health programs.

5. Apply appropriate management processes in the design, implementation and evaluation of global health programs.
6. Demonstrate social, cultural and political awareness of the context in which global health programming takes place.
7. Conduct strategic analysis of factors that influence the success of global health programming.

B. Community-Based Primary Health Care Competencies

1. Use community-based approaches to address priority health problems through full participation of community members and groups
2. Design and manage implementation of household surveys that yield relevant health and social data needed to plan community based PHC programs
3. Analyze local contexts and project implementation designs in order to develop evaluation plans that can be practically applied to community based PHC programs in middle and low-resource settings
4. Design a community based primary health care program from the analysis through implementation to evaluation stages
5. Prepare a training plan for front-line and community health workers involved in community-based PHC

General Requirements

A minimum of 50.5 credits in formal coursework must be earned, with sufficient passing grades (“C” or higher) and an overall GPA of 2.75 or higher. Required courses are noted in the curriculum section. Students can complete the degree program in two years by following the recommended course plan (two courses each term), but they can take up to four years to finish all degree requirements.

Students must complete several free, non-credit training courses prior to the start of the academic program, or during the first term of enrollment. Details about these training courses will be sent via email and posted on the OPAL Student Resources site in [CoursePlus](#).

Standards of Academic Performance

Letter grades must be earned in all courses used to satisfy requirements, unless otherwise specified (such as pass required for Seminars in Public Health). Please note that courses may be counted only once to fulfill requirements. Students must maintain Satisfactory Academic Progress (SAP) toward obtaining their degree or certificate; receive satisfactory grades of “C” or higher in all required courses and continuously maintain a cumulative Grade Point Average (GPA) of at least 2.75 in order to remain a degree candidate in good standing. **Any student who receives a “D” or “F” in a required course must repeat the course and achieve a grade of “C” or better.**

Any student not meeting these standards will be placed on probationary status. Students must attempt to repeat the courses with insufficient grades when they are next offered (typically in the same term in following academic year for most OPAL courses). In cases where conditions are imposed, the Committee will specify the maximum time allowed for satisfaction of the conditions. Failure to satisfy these conditions may result in termination from the program.

If students receive Federal Loans administered through the [Financial Aid Office](#) there are other academic standards that students must abide by in order to comply with Federal Loan disbursement. Students

should reach out to that office to verify any impact that incomplete or failed courses may have on their loans.

Time of Completion Requirement

The MAS program is designed to be completed in two years, but students have up to four years to finish all program requirements if that is a better timeline for them. Students who are receiving federal financial aid should follow the two-year completion plan in order to maintain the minimum credits per term for eligibility.

Students who are approaching their deadline and feel that they are unable to successfully complete all remaining program requirements within four years should reach out to their Academic Advisor and the OPAL Office (OPAL-Office@jhu.edu) to discuss possible scheduling and any options or next steps.

MAS Program in Community-based Primary Health Care Programs in Global Health Curriculum and Schedule of Required Courses

Non-credit courses and trainings

In addition to program-specific credit courses (outlined below), all BSPH students are required to complete a set of non-credit courses and trainings. Students will be emailed detailed information regarding these trainings and they **MUST be completed by the end of first term at the latest**. Please see the list below for all MAS program requirements:

- Introduction to Online Learning (IOL), completed prior to your first term in the program
- Academic and Research Ethics (ARE), must be completed during your first term, or a registration hold may be placed on your account
- Sexual Harassment and Sexual Violence Training
- Required Module on Plagiarism
- Johns Hopkins Opioid Training
- SOURCE: How History Impacts our Work Module
- Acknowledgement and Module for Indigenous Land and Peoples

MAS Program Curriculum and Schedule of Required Courses

In addition to the 2-credit, 3-credit, and 4-credit courses outlined below for Year 1 and 2, the MAS program curriculum requires that students complete **552.603 The Role of Qualitative Methods and Science in Describing and Assessing a Population's Health** (0.5 credit). This course is a requirement for graduation and students will not be awarded the MAS degree until all requirements are completed, including this one. 552.603 The Role of Qualitative Methods and Science in Describing and Assessing a Population's Health *Essentials of One Health* is included in the list below, at the beginning of Year 1 and Year 2, but may be taken in any term offered (currently offered in summer term, 1, 2 and 3).

Students who successfully complete all year one courses with grades of “C” or better, and overall GPA of 2.75 or higher will also be awarded the Certificate in Global Health Practice.

The MAS program is no longer admitting new students. Continuing students have through the end of AY23-24 to complete the degree program. Continuing students should be in regular contact with their Academic Advisor/Program Director and the OPAL Office (OPAL-Office@jhu.edu) to verify outstanding program requirements and possible course substitutions.

The course requirements listed below are those that were included in the original program curriculum, but many will no longer be offered in AY23-24 and require replacement with a similar course. Your Academic Advisor/Program Director and OPAL Office will advise which courses require replacement.

Year	Term	Course Number	Course Title	Credits
1	1	552.603	The Role of Qualitative Methods and Science in Describing and Assessing a Population's Health	.5
1	1	606.601.86	Fundamentals of Global Health Practice	4
1	1	600.601.86	Seminars in Public Health	2
1	2	604.603.86	Ethics in Global Health Practice	2
1	2	604.621.86	Design and Planning of Primary Health Care Projects	4
1	3	600.701.86	Introduction to Epidemiology	4
1	3	604.604.86	Global Epidemiology Policies and Programs	3
1	4	600.709.86	Statistical Concepts in Public Health	3
1	4	604.771.86	Social and Cultural Basis for Community and Primary Health Programs	3

Year	Term	Course Number	Course Title	Credits
2 (if not taken earlier)	1 (or 2,3, summer)	552.603	The Role of Qualitative Methods and Science in Describing and Assessing a Population's Health	.5
2	1	607.701.86	Health and Safety Preparation for Global Health Assignments	1
2	1	607.704.86	Essential Medicines, Commodities, and Supplies Needed for Community Level Primary Health Care Interventions	2
2	1	607.711.86	Applying Evaluation to More Effectively Reach Communities Through Primary Health Care	3
2	2	607.721.86	Urban Primary Health Care in Low and Middle-Income Countries	3
2	2	607.724.86	Applying Household Surveys to Primary Health Care Programs	3
2	3	600.612.86	Professional Development Workshops: Writing for Results	2
2	3	607.735.86	Planning, Training and Learning Programs for Community Health Workers	4
2	4	607.880.86	Community-based Primary Health Care Integrative Activity	4
2	4	607.751.86	Building Community Capacity for Primary Health Care in Low and Middle-Income Countries	3

Master of Applied Science in Global Health Planning and Management

Overview

The Master of Applied Science in Global Health Planning and management builds on the Health Systems Strengthening expertise of the Bloomberg School and the Department of International Health, which provides unmatched opportunities for advanced training, focuses on both local and global issues, and prepares students to address public health problems through multidisciplinary approaches that apply the latest scientific knowledge.

The program will provide you with the skills to plan, implement and evaluate public health programs and services in countries throughout the world. We take a systems approach to understanding how to meet the health needs of communities and local governments/districts. We hope that as a result of this course you will build skills to plan and manage health programs in non-governmental and governmental agencies serving people in underserved areas and low and middle income countries.

Advising Faculty

The faculty listed below will serve as Academic Advisor to each of the students in the MAS program. Students can view their Advisor in [SIS Self-Service](#), by logging in and selecting **Registration** from the left-hand menu, then **Program of Study**.

William Brieger, DrPH
Professor and Program Director, MAS and
Certificate programs in Global Health
wbriege1@jhu.edu

MAS Program in Global Health Planning and Management Competencies

Competencies for this degree build on the Association of Schools of Public Health (ASPH) Global Health Competency Model. Upon completion of the Master of Applied Science in Community-based Primary Health Care, students will be able to:

A. Core Global Health Practice Competencies

1. Apply capacity building processes to global health programming in low and middle-income countries.
2. Identify and collaborate with a wide range of stakeholders whose active participation is required for successful global health programming at community, sub-national, national and regional levels.
3. Apply ethical reasoning to the policy and programming decisions needed for designing and implementing global health programs in low and middle-income countries.
4. Exhibit a health equity and social justice lens in the design and conduct of global health programs.
5. Apply appropriate management processes in the design, implementation and evaluation of global health programs.

6. Demonstrate social, cultural and political awareness of the context in which global health programming takes place.
7. Conduct strategic analysis of factors that influence the success of global health programming.

B. Global Health Planning and Management Competencies

1. Examines approaches to improve health systems performance using frameworks, tools, and strategies to plan, implement, and evaluate changes in health systems in LMIC's.
2. Identify and apply principles and practices of total quality management methods for health systems in developing countries.
3. Utilize systems thinking to determine how societies organize themselves to achieve collective health goals and contribute to policy outcomes.
4. Demonstrate skills for managing non-governmental organizations in the health sector in LMICs.
5. Utilize appropriate evaluate designs and approaches for public health programs in LMICs and advocate the uptake of program results by policymakers.

General Requirements

A minimum of 50.5 credits in formal coursework must be earned, with sufficient passing grades ("C" or higher) and an overall GPA of 2.75 or higher. Required courses are noted in the curriculum section. Students can complete the degree program in two years by following the recommended course plan (two courses each term), but they can take up to four years to finish all degree requirements.

Students must complete several free, non-credit training courses prior to the start of the academic program, or during the first term of enrollment. Details about these training courses will be sent via email and posted on the OPAL Student Resources site in [CoursePlus](#).

Standards of Academic Performance

Letter grades must be earned in all courses used to satisfy requirements, unless otherwise specified (such as pass required for Seminars in Public Health). Please note that courses may be counted only once to fulfill requirements. Students must maintain Satisfactory Academic Progress (SAP) toward obtaining their degree or certificate; receive satisfactory grades of "C" or higher in all required courses and continuously maintain a cumulative Grade Point Average (GPA) of at least 2.75 in order to remain a degree candidate in good standing. **Any student who receives a "D" or "F" in a required course must repeat the course and achieve a grade of "C" or better.**

Any student not meeting these standards will be placed on probationary status. Students must attempt to repeat the courses with insufficient grades when they are next offered (typically in the same term in following academic year for most OPAL courses). In cases where conditions are imposed, the Committee will specify the maximum time allowed for satisfaction of the conditions. Failure to satisfy these conditions may result in termination from the program.

If students receive Federal Loans administered through the [Financial Aid Office](#) there are other academic standards that students must abide by in order to comply with Federal Loan disbursement. Students should reach out to that office to verify any impact that incomplete or failed courses may have on their loans.

Time of Completion Requirement

The MAS program is designed to be completed in two years, but students have up to four years to finish all program requirements if that is a better timeline for them. Students who are receiving federal financial aid should follow the two-year completion plan in order to maintain the minimum credits per term for eligibility.

The MAS program is no longer admitting new students. Continuing students have through the end of AY23-24 to complete the degree program. Continuing students should be in regular contact with their Academic Advisor/Program Director and the OPAL Office (OPAL-Office@jhu.edu) to verify outstanding program requirements and possible course substitutions.

MAS Program in Global Health Planning and Management Curriculum and Schedule of Required Courses

Non-credit courses and trainings

In addition to program-specific credit courses (outlined below), all BSPH students are required to complete a set of non-credit courses and trainings. Students will be emailed detailed information regarding these trainings and they **MUST be completed by the end of first term at the latest**. Please see the list below for all MAS program requirements:

- Introduction to Online Learning (IOL), completed prior to your first term in the program
- Academic and Research Ethics (ARE), must be completed during your first term, or a registration hold may be placed on your account
- Sexual Harassment and Sexual Violence Training
- Required Module on Plagiarism
- Johns Hopkins Opioid Training
- SOURCE: How History Impacts our Work Module
- Acknowledgement and Module for Indigenous Land and Peoples

MAS Program Curriculum and Schedule of Required Courses

In addition to the 2-credit, 3-credit, and 4-credit courses outlined below for Year 1 and 2, the MAS program curriculum requires that students complete **552.603 The Role of Qualitative Methods and Science in Describing and Assessing a Population's Health** (0.5 credit). This course is a requirement for graduation and students will not be awarded the MAS degree until all requirements are completed, including this one. 552.603 The Role of Qualitative Methods and Science in Describing and Assessing a Population's Health *Essentials of One Health* is included in the list below, at the beginning of Year 1 and Year 2, but may be taken in any term offered (currently offered in summer term, 1, 2 and 3).

Students who successfully complete all year one courses with grades of “C” or better, and overall GPA of 2.75 or higher will also be awarded the Certificate in Global Health Practice.

The MAS program is no longer admitting new students. Continuing students have through the end of AY23-24 to complete the degree program. Continuing students should be in regular contact with their Academic Advisor/Program Director and the OPAL Office (OPAL-Office@jhu.edu) to verify outstanding program requirements and possible course substitutions.

The course requirements listed below are those that were included in the original program curriculum, but many will no longer be offered in AY23-24 and require replacement with a similar course. Your Academic Advisor/Program Director and OPAL Office will advise which courses require replacement.

Year	Term	Course Number	Course Title	Credits
1	1	552.603	The Role of Qualitative Methods and Science in Describing and Assessing a Population's Health	.5
1	1	606.601.86	Fundamentals of Global Health Practice	4
1	1	600.601.86	Seminars in Public Health	2
1	2	604.603.86	Ethics in Global Health Practice	2
1	2	604.621.86	Design and Planning of Primary Health Care Projects	4
1	3	600.701.86	Introduction to Epidemiology	4
1	3	604.604.86	Global Epidemiology Policies and Programs	3
1	4	600.709.86	Statistical Concepts in Public Health	3
1	4	604.771.86	Social and Cultural Basis for Community and Primary Health Programs	3

Year	Term	Course Number	Course Title	Credits
2 (if not taken earlier)	1 (or 2,3, summer)	552.603	The Role of Qualitative Methods and Science in Describing and Assessing a Population's Health	.5
2	1	607.701.86	Health and Safety Preparation for Global Health Assignments	1
2	1	608.705.86	Emerging Systems in Pharmaceutical Systems Strengthening	3
2	1	608.712.86	Frameworks and Tools for Health Systems in Global Settings	3
2	2	602.721.86	Organizing for Public Health: A Systems Approach	2
2	2	608.725.86	Quality Management Concepts and Tools for Healthcare in Low and Middle Income Countries	4
2	3	600.612.86	Professional Development Workshops: Writing for Results	2
2	3	608.736.86	Strengthening Health Information in Low and Middle-Income Countries	4
2	4	608.880.86	Global Health Planning and Management Integrative Activity	4
2	4	608.771.86	Non-Government Organizations and the Administration of Global Health Programs	3

Master of Applied Science in Humanitarian Health

Overview

The goal of this MAS program is to prepare students with the skills to support and lead humanitarian organizations in service delivery, applied research and public health advocacy.

The program will afford learners with training in epidemiology and biostatistics and other content areas that reflect the breadth of public health; practical skills derived from workshops in professional development; and content specific to humanitarian settings such as assessment methods and sector-based courses in nutrition and food security and water and sanitation.

Advising Faculty

One or more of the faculty listed below will serve as Academic Advisor to each of the students in the MAS program. Students can view their Advisor in [SIS Self-Service](#), by logging in and selecting **Registration** from the left-hand menu, then **Program of Study**.

Paul Spiegel, MD
Professor of the Practice and Program Co-Director, MAS and Certificate programs in Humanitarian Health
pbspiegel@jhu.edu

W. Courtland Robinson, PhD
Associate Professor and Program Co-Director, MAS and Certificate programs in Humanitarian Health
wrobins2@jhu.edu

MAS Program Competencies

The goal of the MAS in Humanitarian Health is to prepare students from diverse individual and professional backgrounds for positions in humanitarian health-related practice and research, humanitarian assistance, program management in disaster and emergency settings, and humanitarian advocacy. The specific educational objectives are below.

Upon completion of the MAS in Humanitarian Health, students will be able to:

1. Demonstrate working knowledge of humanitarian architecture, including key organizations, international and UN systems, and sectors, including health; water, sanitation, and hygiene (WASH); shelter; nutrition; food security; and protection.
2. Demonstrate working knowledge of core humanitarian and human rights principles, treaty instruments, and codes of ethical conduct in humanitarian and disaster settings.
3. Apply skills in assessment, monitoring and evaluation, and research relevant to humanitarian contexts—including qualitative, quantitative and mixed methods.
4. Demonstrate basic skills in humanitarian health project design, planning and implementation, including awareness of appropriate interventions and how to contextualize them in operational settings.
5. Critically assess and synthesize information, prioritize decisions and actions, and communicate these decisions and actions effectively.
6. Demonstrate key management and leadership skills needed to function in humanitarian and disaster contexts, including developing and maintaining collaborative relationships, operating

safely and effectively, adapting and coping, and maintaining professionalism and critical judgment.

7. Utilize evidence generated from case studies to apply leadership and management skills, as well as program evaluation methods to inform decision-making in humanitarian and disaster settings.
8. Synthesize skills and knowledge derived from the course in a service-learning project addressing a current problem or issue in the humanitarian and disaster fields.

General Requirements

A minimum of 49.5 credits in formal coursework must be earned, with sufficient passing grades (“C” or higher) and an overall GPA of 2.75 or higher. Required courses are noted in the curriculum section. Students can complete the degree program in two years by following the recommended course plan (two courses each term), but they can take up to four years to finish all degree requirements.

Students must complete several free, non-credit training courses prior to the start of the academic program, or during the first term of enrollment. Details about these training courses will be sent via email and posted on the OPAL Student Resources site in [CoursePlus](#).

Standards of Academic Performance

Letter grades must be earned in all courses used to satisfy requirements, unless otherwise specified (such as pass required for Seminars in Public Health). Please note that courses may be counted only once to fulfill requirements. Students must maintain Satisfactory Academic Progress (SAP) toward obtaining their degree or certificate; receive satisfactory grades of “C” or higher in all required courses and continuously maintain a cumulative Grade Point Average (GPA) of at least 2.75 in order to remain a degree candidate in good standing. **Any student who receives a “D” or “F” in a required course must repeat the course and achieve a grade of “C” or better.**

Any student not meeting these standards will be placed on probationary status. Students must attempt to repeat the courses with insufficient grades when they are next offered (typically in the same term in following academic year for most OPAL courses). In cases where conditions are imposed, the Committee will specify the maximum time allowed for satisfaction of the conditions. Failure to satisfy these conditions may result in termination from the program.

If students receive Federal Loans administered through the [Financial Aid Office](#) there are other academic standards that students must abide by in order to comply with Federal Loan disbursement. Students should reach out to that office to verify any impact that incomplete or failed courses may have on their loans.

Time of Completion Requirement

The MAS program is designed to be completed in two years, but students have up to four years to finish all program requirements if that is a better timeline for them. Students who are receiving federal financial aid should follow the two-year completion plan in order to maintain the minimum credits per term for eligibility.

The MAS program is no longer admitting new students. Continuing students have through the end of AY23-24 to complete the degree program. Continuing students should be in regular contact with their

Academic Advisor/Program Director and the OPAL Office (OPAL-Office@jhu.edu) to verify outstanding program requirements and possible course substitutions.

MAS Program in Humanitarian Health Curriculum and Schedule of Required Courses

Non-credit courses and trainings

In addition to program-specific credit courses (outlined below), all BSPH students are required to complete a set of non-credit courses and trainings. Students will be emailed detailed information regarding these trainings and they **MUST be completed by the end of first term at the latest**. Please see the list below for all MAS program requirements:

- Introduction to Online Learning (IOL), completed prior to your first term in the program
- Academic and Research Ethics (ARE), must be completed during your first term, or a registration hold may be placed on your account
- Sexual Harassment and Sexual Violence Training
- Required Module on Plagiarism
- Johns Hopkins Opioid Training
- SOURCE: How History Impacts our Work Module
- Acknowledgement and Module for Indigenous Land and Peoples

MAS Program Curriculum and Schedule of Required Courses

In addition to the 2-credit, 3-credit, and 4-credit courses outlined below for Year 1 and 2, the MAS program curriculum requires that students complete **552.612 *Essentials of One Health*** (0.5 credit). This course is a requirement for graduation and students will not be awarded the MAS degree until all requirements are completed, including this one. 552.612 *Essentials of One Health* is included in the list below, at the beginning of Year 1 and Year 2, but may be taken in any term offered (currently offered in 1, and 4).

The MAS program is no longer admitting new students. Continuing students have through the end of AY23-24 to complete the degree program. Continuing students should be in regular contact with their Academic Advisor/Program Director and the OPAL Office (OPAL-Office@jhu.edu) to verify outstanding program requirements and possible course substitutions.

The course requirements listed below are those that were included in the original program curriculum, but many will no longer be offered in AY23-24 and require replacement with a similar course. Your Academic Advisor/Program Director and OPAL Office will advise which courses require replacement.

Year	Term	Course Number	Course Title	Credits
1	1	552.612	Essentials of One Health	.5
1	1	604.601.86	Public Health in Humanitarian Emergencies	4
1	1	600.601.86	Seminars in Public Health	2
1	2	604.621.86	Design and Planning of Primary Health Care Projects	4
1	2	604.641.86	Disaster Preparedness	2
1	3	600.701.86	Introduction to Epidemiology	4

1	3	604.651.86	Introduction of Water, Sanitation, and Hygiene in Emergencies	2
1	4	600.709.86	Statistical Concepts in Public Health	3
1	4	604.771.86	Social and Cultural Basis for Community and Primary Health Programs	3

Year	Term	Course Number	Course Title	Credits
2 (if not taken earlier)	1 (or 4)	552.612	Essentials of One Health	.5
2	1	604.701.86	Assessment Approaches in Humanitarian Settings	3
2	1	604.715.86	Health Needs and Service Provision in Humanitarian Emergencies	3
2	2	604.721.86	Securing Food Assistance in Humanitarian Emergencies	2
2	2	604.731.86	Management and Leadership in Humanitarian Health	2
2	2	604.603.86	Ethics in Global Health Practice	2
2	3	604.741.86	Human Rights in Humanitarian Emergencies	2
2	3	600.612.86	Professional Development Workshop: Writing for Results	2
2	3	604.751.86	Mental Health in Humanitarian Emergencies	2
2	4	604.880.86	Humanitarian Health Integrative Activity	4
2	4	608.771.86	Non-Government Organizations and the Administration of Global Health Programs	3

Certificate in Global Health Practice

Overview

The Certificate in Global Health Practice builds on the expertise of the Bloomberg School and the Department of International Health in areas of health systems and community programming. Our School and program provide unmatched opportunities for advanced training, focuses on both local and global issues, and prepares students to address public health problems through multidisciplinary approaches that apply the latest scientific knowledge.

The program will provide you with a foundation for understanding how to meet the health needs of health organizations and communities from the vantage point of non-governmental and governmental agencies serving people in underserved areas and low and middle income countries.

Advising Faculty

The faculty listed below will serve as Academic Advisor to each of the students in the MAS program. Students can view their Advisor in [SIS Self-Service](#), by logging in and selecting **Registration** from the left-hand menu, then **Program of Study**.

William Brieger, DrPH
Professor and Program Director, MAS and
Certificate programs in Global Health
wbriege1@jhu.edu

Certificate Program Competencies

Competencies for this program build on the Association of Schools of Public Health (ASPH) Global Health Competency Model. Upon completion of the Certificate in Global Health Practice, students will be able to:

1. Apply capacity building processes to global health programming in low and middle-income countries.
2. Identify and collaborate with a wide range of stakeholders whose active participation is required for successful global health programming at community, sub-national, national and regional levels.
3. Apply ethical reasoning to the policy and programming decisions needed for designing and implementing global health programs in low and middle-income countries.
4. Exhibit a health equity and social justice lens in the design and conduct of global health programs.
5. Apply appropriate management processes in the design, implementation and evaluation of global health programs.
6. Demonstrate social, cultural and political awareness of the context in which global health programming takes place.
7. Conduct strategic analysis of factors that influence the success of global health programming.

General Requirements

A minimum of 20 credits in formal coursework must be earned, with sufficient passing grades (“C” or higher) and an overall GPA of 2.75 or higher. Required courses are noted in the curriculum section. Students can complete the degree program in two years by following the recommended course plan (two courses each term), but they can take up to four years to finish all degree requirements.

Students must complete several free, non-credit training courses prior to the start of the academic program, or during the first term of enrollment. Details about these training courses will be sent via email and posted on the OPAL Student Resources site in [CoursePlus](#).

Standards of Academic Performance

Letter grades must be earned in all courses used to satisfy requirements, unless otherwise specified (such as pass required for Seminars in Public Health). Please note that courses may be counted only once to fulfill requirements. Students must maintain Satisfactory Academic Progress (SAP) toward obtaining their degree or certificate; receive satisfactory grades of “C” or higher in all required courses and continuously maintain a cumulative Grade Point Average (GPA) of at least 2.75 in order to remain a degree candidate in good standing. **Any student who receives a “D” or “F” in a required course must repeat the course and achieve a grade of “C” or better.**

Any student not meeting these standards will be placed on probationary status. Students must attempt to repeat the courses with insufficient grades when they are next offered (typically in the same term in following academic year for most OPAL courses). In cases where conditions are imposed, the Committee will specify the maximum time allowed for satisfaction of the conditions. Failure to satisfy these conditions may result in termination from the program.

If students receive Federal Loans administered through the [Financial Aid Office](#) there are other academic standards that students must abide by in order to comply with Federal Loan disbursement. Students should reach out to that office to verify any impact that incomplete or failed courses may have on their loans.

Time of Completion Requirement

The Certificate program is designed to be completed in one year, but students have up to three years to finish all program requirements if that is a better timeline for them.

Certificate Program in Global Health Practice Curriculum and Schedule of Required Courses

Non-credit courses and trainings

In addition to program-specific credit courses (outlined below), all BSPH students are required to complete a set of non-credit courses and trainings. Students will be emailed detailed information regarding these trainings and they **MUST be completed by the end of first term at the latest**. Please see the list below for all MAS program requirements:

- Introduction to Online Learning (IOL), completed prior to your first term in the program
- Academic and Research Ethics (ARE), must be completed during your first term, or a registration hold may be placed on your account

- Sexual Harassment and Sexual Violence Training
- Required Module on Plagiarism
- Johns Hopkins Opioid Training
- SOURCE: How History Impacts our Work Module
- Acknowledgement and Module for Indigenous Land and Peoples

Certificate Program Curriculum and Schedule of Required Courses

The Certificate program is not currently admitting new students. Continuing students have through three years from first matriculation to complete the certificate program. Continuing students should be in regular contact with their Academic Advisor/Program Director and the OPAL Office (OPAL-Office@jhu.edu) to verify outstanding program requirements and possible course substitutions.

The course requirements listed below are those that were included in the original program curriculum, but many will no longer be offered in AY23-24 and require replacement with a similar course. Your Academic Advisor/Program Director and OPAL Office will advise which courses require replacement.

Year	Term	Course Number	Course Title	Credits
1	1	606.601.86	Fundamentals of Global Health Practice	4
1	1	Choose 600.601.86 OR 607.704.86	Seminars in Public Health Essential Medicines, Commodities, and Supplies Needed for Community Level Primary Health Care Interventions	2
1	2	604.621.86	Design and Planning of Primary Health Care Projects	4
1	3	Choose 600.701.86 OR 607.735.86	Introduction to Epidemiology Planning, Training and Learning Programs for Community Health Workers	4
1	3	604.604.86	Global Epidemiology Policies and Programs	3
1	4	604.771.86	Social and Cultural Basis for Community and Primary Health Programs	3

Certificate in Population Health Management

Overview

The health care services delivery landscape is rapidly transforming. New competencies are required to effectively navigate and succeed under value-based reimbursement models and population-oriented health delivery initiatives. This interdisciplinary degree program provides experienced professionals a comprehensive approach to developing population health management systems and strategies and leading transformation to value-based, population-focused care delivery.

Advising Faculty

One or more of the faculty listed below will serve as Academic Advisor to each of the students in the Certificate program. Students can view their Advisor in [SIS Self-Service](#), by logging in and selecting **Registration** from the left-hand menu, then **Program of Study**.

Mark Bittle, DrPH
Senior Scientist and Program Director
mbittle1@jhu.edu

David Baker, DrPH, MBA
Assistant Professor - Adjunct
dbaker26@jhmi.edu

Megan Priolo, DrPH
Associate
mmaguir5@jhu.edu

Debra Thompson, DNP
Associate
dthomp79@jhu.edu

Certificate Program Competencies

Upon completion of the Certificate program in Population Health Management, the individual will acquire skills necessary to:

1. Identify determinants of population health that impact health outcomes in a community and apply the essentials of public health practice to design low cost interventions;
2. Lead the formation and management of contemporary health care systems that consist of, and rely upon, diverse stakeholders in the organization and delivery of community-based models of care;
3. Communicate effectively to constituencies both within and outside of the health system;
4. Articulate and apply frameworks for collecting, analyzing, and using data to inform decisions, facilitate care coordination, and improve health outcomes of targeted populations within and outside the health system;
5. Develop effective collaboratives and support state and local public health agency efforts in assessing health needs, quality of services, and strategies for improving health services delivery.

General Requirements

A minimum of 25 credits in formal coursework must be earned, with sufficient passing grades ("C" or higher) and an overall GPA of 2.75 or higher. Required courses are noted in the curriculum section. Students can complete the degree program in one year by following the recommended course plan (two courses each term), but they can take up to three years to finish all program requirements.

Students must complete several free, non-credit training courses prior to the start of the academic program, or during the first term of enrollment. Details about these training courses will be sent via email and posted on the OPAL Student Resources site in [CoursePlus](#).

Standards of Academic Performance

Letter grades must be earned in all courses used to satisfy requirements, unless otherwise specified (such as pass required for Seminars in Public Health). Please note that courses may be counted only once to fulfill requirements. Students must maintain Satisfactory Academic Progress (SAP) toward obtaining their degree or certificate; receive satisfactory grades of “C” or higher in all required courses and continuously maintain a cumulative Grade Point Average (GPA) of at least 2.75 in order to remain a degree candidate in good standing. **Any student who receives a “D” or “F” in a required course must repeat the course and achieve a grade of “C” or better.**

Any student not meeting these standards will be placed on probationary status. Students must attempt to repeat the courses with insufficient grades when they are next offered (typically in the same term in following academic year for most OPAL courses). In cases where conditions are imposed, the Committee will specify the maximum time allowed for satisfaction of the conditions. Failure to satisfy these conditions may result in termination from the program.

If students receive Federal Loans administered through the [Financial Aid Office](#) there are other academic standards that students must abide by in order to comply with Federal Loan disbursement. Students should reach out to that office to verify any impact that incomplete or failed courses may have on their loans.

Time of Completion Requirement

The Certificate program is designed to be completed in one year, but students have up to three years to finish all program requirements if that is a better timeline for them. Students who are receiving federal financial aid should follow the one-year completion plan in order to maintain the minimum credits per term for eligibility.

Students who are approaching their deadline and feel that they are unable to successfully complete all remaining program requirements within three years should reach out to their Academic Advisor and the OPAL Office (OPAL-Office@jhu.edu) to discuss possible scheduling and any options or next steps.

Certificate Program in Population Health Management Curriculum and Schedule of Required Courses

Non-credit courses and trainings

In addition to program-specific credit courses (outlined below), all BSPH students are required to complete a set of non-credit courses and trainings. Students will be emailed detailed information regarding these trainings and they **MUST be completed by the end of first term at the latest**. Please see the list below for all Certificate program requirements:

- Introduction to Online Learning (IOL), completed prior to your first term in the program
- Academic and Research Ethics (ARE), must be completed during your first term, or a registration hold may be placed on your account
- Sexual Harassment and Sexual Violence Training

- Required Module on Plagiarism
- Johns Hopkins Opioid Training
- SOURCE: How History Impacts our Work Module
- Acknowledgement and Module for Indigenous Land and Peoples

Certificate Program Curriculum and Schedule of Required Courses

Courses are listed below in sequential order, for students who are following a one (1)-year plan. Courses are only offered in the terms indicated. Some of the courses listed below have specific prerequisite courses. Your Academic Advisor can provide guidance if you wish to follow a 2-year or 3-year completion plan. If you need to take courses out of sequence, please verify that you have met any necessary prerequisites before enrolling. If you have any questions about scheduling and prerequisites, please contact your Academic Advisor or the OPAL Office.

Year	Term	Course Number	Course Title	Credits
1	1	602.631.86	Essentials of Population Health Mangement	3
1	1	602.651.86	Principles and Applications of Advance Payment Models in Population Health Management	3
1	2	602.671.86	Collective Impact: Developing and Leading Community Partnerships to Improve Population Health	3
1	2	602.681.86	Accountable Care: Assessing Quality and Effectiveness of Population Health Initiatives	3
1	3	600.701.86	Introduction to Epidemiology	4
1	3	602.731.86	Population and Consumer Health Informatics	3
1	4	600.709.86	Statistical Concepts in Public Health	3
1	4	602.691.86	Managing Health Across the Continuum: Contemporary Models of Disease Prevention and Care Management	3

Certificate in Spatial Analysis for Public Health

Overview

Spatial analysis is an emerging field with applications evolving that are vast and paramount, impacting public health at the local and global level. The carefully sequenced courses of the certificate program in Spatial Analysis for Public Health introduce and reinforce a unifying comprehensive spatial science paradigm, to include components of Spatial Data, GIS and Spatial Statistics.

Advising Faculty

One or more of the faculty listed below will serve as Academic Advisor to each of the students in the Certificate program. Students can view their Advisor in [SIS Self-Service](#), by logging in and selecting **Registration** from the left-hand menu, then **Program of Study**.

Frank Curriero, Program Co-Director – Spatial Analysis for Public Health, OPAL Instructor
fcurriero@jhu.edu

Tim Shields, Program Co-Director – Spatial Analysis for Public Health, OPAL Instructor
tshields@jhu.edu

Certificate Program Competencies

Upon completion of the certificate program in Spatial Analysis for Public Health the individual will be able to:

1. Synthesize how geography affects public health;
2. Obtain and transfer information from spatial data technologies into a database appropriate for mapping;
3. Utilize a geographic information system to map and spatially integrate public health related databases;
4. Analyze maps using tools from the field of spatial statistics to describe and interpret distributions of health outcomes in a population;
5. Design and implement a spatial analysis protocol for addressing a public health problem.

General Requirements

A minimum of 20 credits in formal coursework must be earned, with sufficient passing grades (“C” or higher) and an overall GPA of 2.75 or higher. Required courses are noted in the curriculum section. Students can complete the certificate program in one year by following the recommended course plan (two courses each term), but they can take up to three years to finish all program requirements.

Students must complete several free, non-credit training courses prior to the start of the academic program, or during the first term of enrollment. Details about these training courses will be sent via email and posted on the OPAL Student Resources site in [CoursePlus](#).

Standards of Academic Performance

Letter grades must be earned in all courses used to satisfy requirements, unless otherwise specified (such as pass required for Seminars in Public Health). Please note that courses may be counted only once to fulfill requirements. Students must maintain Satisfactory Academic Progress (SAP) toward

obtaining their degree or certificate; receive satisfactory grades of “C” or higher in all required courses and continuously maintain a cumulative Grade Point Average (GPA) of at least 2.75 in order to remain a degree candidate in good standing. **Any student who receives a “D” or “F” in a required course must repeat the course and achieve a grade of “C” or better.**

Any student not meeting these standards will be placed on probationary status. Students must attempt to repeat the courses with insufficient grades when they are next offered (typically in the same term in following academic year for most OPAL courses). In cases where conditions are imposed, the Committee will specify the maximum time allowed for satisfaction of the conditions. Failure to satisfy these conditions may result in termination from the program.

If students receive Federal Loans administered through the [Financial Aid Office](#) there are other academic standards that students must abide by in order to comply with Federal Loan disbursement. Students should reach out to that office to verify any impact that incomplete or failed courses may have on their loans.

Time of Completion Requirement

The Certificate program is designed to be completed in one year, but students have up to three years to finish all program requirements if that is a better timeline for them. Students who are receiving federal financial aid should follow the one-year completion plan in order to maintain the minimum credits per term for eligibility.

Students who are approaching their deadline and feel that they are unable to successfully complete all remaining program requirements within three years should reach out to their Academic Advisor and the OPAL Office (OPAL-Office@jhu.edu) to discuss possible scheduling and any options or next steps.

Certificate Program in Spatial Analysis for Public Health Curriculum and Schedule of Required Courses

Non-credit courses and trainings

In addition to program-specific credit courses (outlined below), all BSPH students are required to complete a set of non-credit courses and trainings. Students will be emailed detailed information regarding these trainings and they **MUST be completed by the end of first term at the latest**. Please see the list below for all MAS program requirements:

- Introduction to Online Learning (IOL), completed prior to your first term in the program
- Academic and Research Ethics (ARE), must be completed during your first term, or a registration hold may be placed on your account
- Sexual Harassment and Sexual Violence Training
- Required Module on Plagiarism
- Johns Hopkins Opioid Training
- SOURCE: How History Impacts our Work Module
- Acknowledgement and Module for Indigenous Land and Peoples

Certificate Program Curriculum and Schedule of Required Courses

Courses are listed below in sequential order, for students who are following a one (1)-year plan. Courses are only offered in the terms indicated. Some of the courses listed below have specific prerequisite courses. Your Academic Advisor can provide guidance if you wish to follow a 2-year or 3-year completion

plan. If you need to take courses out of sequence, please verify that you have met any necessary prerequisites before enrolling. If you have any questions about scheduling and prerequisites, please contact your Academic Advisor or the OPAL Office.

Year	Term	Course Number	Course Title	Credits
1	1	601.731.86	Spatial Analysis for Public Health*	4
1	2	601.732.86	Spatial Data Technologies for Mapping*	4
2	3	601.733.86	Applied Spatial Statistics*	4
2	3	601.805.86	Spatial Analysis Journal Club	2
2	4	601.734.86	Spatial Applications*	4

***IMPORTANT NOTE: The 4-credit courses (marked with an *) MUST BE COMPLETED in the order shown above.**

CEPH Accreditation

About CEPH

CEPH is the Council on Education for Public Health. This agency is recognized by the U.S. Department of Education in accrediting schools of public health and public health programs. The Bloomberg School of Public Health receives its accreditation from CEPH, ensuring that the programs and educational experiences of its students are of the highest quality. Accreditation is awarded and maintained based on the School's compliance to CEPH's foundational competencies and additional accreditation criteria. For additional information on CEPH, most recent accreditation criteria, and the accreditation process, please visit the [CEPH website](#).

Foundational Public Health Knowledge

As schools of public health, CEPH ensures that all degree graduates of a public health program have foundational knowledge in two major branches of public health:

Profession & Science in Public Health

1. Explain public health history, philosophy, and values.
2. Identify the core functions of public health and the 10 Essential Services.
3. Explain the role of quantitative and qualitative methods and sciences in describing and assessing a population's health.
4. List major causes and trends of morbidity and mortality in the U.S. or other community relevant to the school or program.
5. Discuss the science of primary, secondary, and tertiary prevention in population health, including health promotion, screening, etc.
6. Explain the critical importance of evidence in advancing public health knowledge.

Factors Related to Human Health

7. Explain effects of environmental factors on a population's health.
8. Explain biological and genetic factors that affect a population's health.
9. Explain behavioral and psychological factors that affect a population's health.
10. Explain the social, political, and economic determinants of health and how they contribute to population health and health inequities.
11. Explain how globalization affects global burdens of disease.
12. Explain an ecological perspective on the connections among human health, animal health, and ecosystem health (e.g., One Health).

The competencies shown above apply to the curriculum of all MAS programs and are covered by the academic content therein.