

Spring 2020

LETTER FROM THE DIRECTOR

In these extraordinary times, I have never been more proud to be part of the Johns Hopkins community. From creating dashboards to guide policymaking (<https://coronavirus.jhu.edu/map.html>) to podcasts that bring evidence and expertise from our institution to the public (<https://www.jhsph.edu/podcasts/public-health-on-call/>), the Hopkins community has been helping set the path forward in this crisis. Faculty, staff, and students have demonstrated tremendous tenacity and resilience in adapting to remote research and teaching from home work settings while contributing to the front lines, to our neighborhoods, and looking after family, friends, neighbors, and extended networks. In the context of the pressing and immediate difficulties of the current moment, the mission of our Center has never been more important.

As we enter the 2nd month of connecting largely through remote interactions, it is worthwhile and important to continue to mark successes and accomplishments. In the Spring issue, I am especially pleased to congratulate Dr. Lauren Nicholas on her promotion to Associate Professor, along with other notable accomplishments of Center faculty and students.

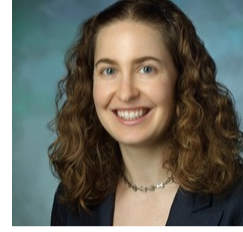
Sending my best to you and your families for staying safe and well.

Sincerely,

Jennifer Wolff, PhD
Eugene and Mildred Lipitz Professor
Director, Roger C. Lipitz Center for Integrated Health Care

FACULTY SPOTLIGHT

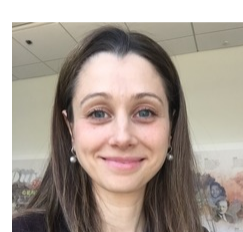
Congratulations to **Lauren Hersch Nicholas, PhD**, who has been promoted to **Associate Professor** in the department of Health Policy and Management! Dr. Nicholas is a health economist and national leader with expertise in Medicare, aging, and end-of-life care working on consequences and determinants of health care use. Dr. Nicholas serves as the Director of the PhD concentration in health economics and is core faculty in the Lipitz Center for Integrated Health Care. A summary of Dr. Nicholas' work can be found [here](#).



RESEARCH FINDINGS

Older Americans' Preferences: Lower Drug Prices or Prescription Plan Choice

A study by **Mariana Social** and **Gerard Anderson** in the *American Journal of Public Health* examines whether older adults would be willing to trade greater choice of drug prescription plans in exchange for lower drug prices. Study findings indicate that older adults prefer lower spending over prescription plan choice, and that this association is stronger among older adults in worse health, with lower education, and lower income. [Read More.](#)



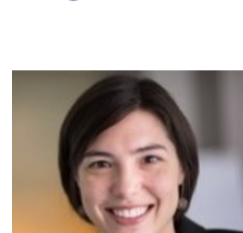
Measuring, Valuing, and Preventing Health-Related Productivity Loss

A commentary by **Emmanuel Drabo**, **Joseph Levy**, and **Darrell Gaskin** in *British Journal of Dermatology* discusses the costs of health-related work productivity loss borne by workers and employers for persons with psoriasis. The authors suggest that much of the cost could potentially be offset through investments in education, reduced perceived stigma, equitable access to health care, health benefit packages that go beyond work wellness programs, and flexible work arrangements. [Read More.](#)



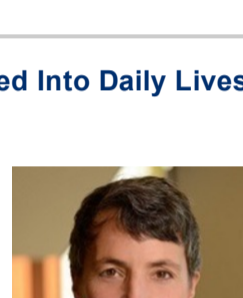
Dental, Vision, and Hearing Services: Access, Spending, and Coverage For Medicare Beneficiaries

A study by **Amber Willink**, **Nicholas Reed**, **Bonnielin Swenor**, **Leah Leinbach**, **Eva DuGoff**, and **Karen Davis** in *Health Affairs* discusses current Medicare policy opportunities that expand dental, vision, and hearing services. While Medicare does not cover most of these services, coverage has increased recently as a result of changes in state Medicaid programs and increased enrollment in Medicare Advantage plans. In this analysis, the authors discuss current proposals being considered by Congress in light of recent enrollment trends. [Read More.](#)



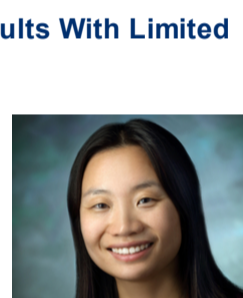
Pilot Outcomes of a Multicomponent Fall Risk Program Integrated Into Daily Lives of Community-Dwelling Older Adults

Study by **Sarah Szanton**, **Lindy Clemson**, **Minhui Liu**, **Laura Gitlin**, **Melissa Hladek**, **Sarah LaFave**, **David Roth**, **Katherine Marx**, **Cynthia Felix**, **Safiyah Okoye**, **Xuan Zhang**, **Svetlana Bautista**, and **Marianne Granbom** in the *Journal of Applied Gerontology* discusses the impacts of the LIVE-LIFE intervention, a multifaceted approach including medication review, vision checkups, and occupational therapist-led-exercises for older adults at risk for falls. Study results indicated a reduction in all fall-related predictor categories and higher reported feelings of safety at home. [Read More.](#)



Clinician Perspectives on Overscreening for Cancer in Older Adults With Limited Life Expectancy

Study by **Nancy Schoenborn**, **Jacqueline Massare**, **Reuben Park**, **Craig Pollack**, **Youngjee Choi**, and **Cynthia M. Boyd** in *Journal of the American Geriatrics Society* examines primary care clinician perspectives on perceived overscreening for breast, colorectal, or prostate cancers in older adults with limited life expectancy. Findings suggest many, but not all, clinicians perceive overscreening as a problem. This study highlights the need to refine current recommended cancer screening approaches and identify strategies to avoid unintended consequences. [Read More.](#)



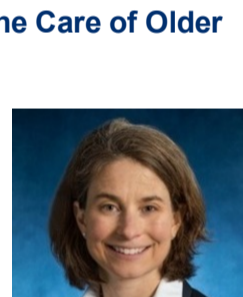
NEWS FROM THE NATIONAL HEALTH AND AGING TRENDS STUDY

Eight rounds of NHATS have been released, affording annual data from 2011-2018, with three waves of the National Study of Caregivers: 2011, 2015, and 2017. Preparation is underway for the 10th year of NHATS interviews. Details are available at www.nhats.org. Nearly 4,000 users have registered to access NHATS data, from which 300+ peer-reviewed articles have been published, including:



Family Caregivers' Experiences With Health Care Workers in the Care of Older Adults With Activity Limitations

Study by **Jennifer Wolff**, **Vicki Freedman**, **John Mulcahy**, and **Judith Kasper** in *JAMA Open Network* finds nearly one-half of caregivers were never asked by older adults' clinicians about whether they needed help in managing care. Caregivers of adults with dementia were more likely to report being asked about needing help, but no more likely to be asked about whether they understood treatments or felt listened to by healthcare professionals. Further investigation into how to create and sustain supportive relationships between caregivers and older adults' health care workers may facilitate higher-quality care. [Read More.](#)



This research was highlighted by [AARP](#).

NEWS & UPDATES

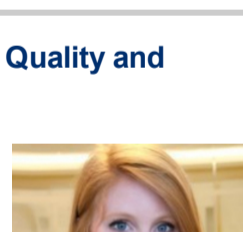
Mani Keita Receives Health Policy & Management Endowment Award

Congratulations to **Mani Keita**, who has been awarded the *Pearl and Jeremiah Scholarship* from the department of Health Policy and Management. Established in 2001, the Pearl and Jeremiah German Scholarship in Gerontology provides support to doctoral candidates who have declared an interest in gerontology. Mani's dissertation examines health and work productivity among working family caregivers of older adults.



Julia Burgdorf Receives Award from Alliance for Home Health Quality and Improvement

Congratulations to **Julia Burgdorf**, who has received funding from the *Alliance for Home Health Quality and Improvement* to study existing challenges and best practices in supporting family caregivers of older adults during home health care. Julia is a PhD Candidate and research assistant at the Lipitz Center whose research focuses on the intersection of family caregiving and home-based models of care for older adults.



SELECT RECENT PUBLICATIONS

Aschmann HE, Puhan MA, Robbins CW, Bayliss EA, Chan WV, Mularski RA, Wilson RF, Bennett WL, Sheehan OC, Yu T, Yebyo HG, Leff B, Tabano H, Armacost K, Glover C, Maslow K, Mintz S, Boyd CM. [Outcome preferences of older people with multiple chronic conditions and hypertension: a cross-sectional survey using best-worst scaling.](#) Health Qual Life Outcomes. 2019 Dec 19;17(1):186.

Berkowitz SA, Edwards ST, Polsky D. [Cash Benchmarking For Integrated Health Care And Human Services Interventions: Finding The Value Added.](#) Health Aff (Millwood). 2020 Apr;39(4):582-586.

Choi Y, Radhakrishnan A, Mahabare D, Patole S, Dy SM, Pollack CE, Berger ZD, Peairs KS. [The Johns Hopkins Primary Care for Cancer Survivor Clinic: lessons learned in our first 4 years.](#) J Cancer Surviv. 2020 Feb;14(1):19-25.

Green AR, Segal J, Boyd CM, Huang J, Roth DL. [Patterns of Potentially Inappropriate Bladder Antimuscarinic Use in People with Dementia: A Retrospective Cohort Study.](#) Drugs Real World Outcomes. 2020 Feb 12.

Harrison KL, Leff B, Altan A, Dunning S, Patterson CR, Ritchie CS. [What's Happening at Home: A Claims-based Approach to Better Understand Home Clinical Care Received by Older Adults.](#) Med Care. 2020 Apr;58(4):360-367.

Reckrey JM, Morrison RS, Boerner K, Szanton SL, Bollens-Lund E, Leff B, Ornstein KA. [Living in the Community With Dementia: Who Receives Paid Care?](#) J Am Geriatr Soc. 2020 Jan;68(1):186-191.

Riffin C, Wolff JL, Estill M, Prabhu S, Pillemer JA. [Caregiver Needs Assessment in Primary Care: Views of Clinicians, Staff, Patients, and Caregivers.](#) J Am Geriatr Soc. 2020 Mar 13.

Social MP, Greene JA. [Interchangeable Insulins - New Pathways for Safe, Effective, Affordable Diabetes Therapy.](#) N Engl J Med. 2020 Mar 12;382(11):981-983.

Usher T, Bata B, Thorpe RJ, Huang J, Samuel LJ, Kasper JD, Bandeen-Roche K. [Dissecting the Racial/Ethnic Disparity in Jerronta a Nationally Representative Cohort Study with Respect to Health, Income, and Measurement.](#) J Gerontol A Biol Sci Med Sci. 2020 Mar 9.

Roger C. Lipitz Center for Integrated Health Care

About Us | Center News | Research Projects

Share this email:



Manage your preferences | Opt out using TrueRemove®
Got this as a forward? Sign up to receive our future emails.
View this email online.

624 North Broadway, Room 692
Baltimore, MD | 21205 US

This email was sent to .
To continue receiving our emails, add us to your address book.



Subscribe to our email list.